

FLOWER POWER

THE LANDSCAPER

JUNE 2018

ISSUE 229 | £3.95

THE UK'S
NUMBER 1
LANDSCAPING
INDUSTRY
MAGAZINE



COVER STORY: BLOOM DUBLIN

PLUS

GaLaBau | LANDSCAPE AT BATTERSEA PARK
SWIMMING PONDS | LIGHTING

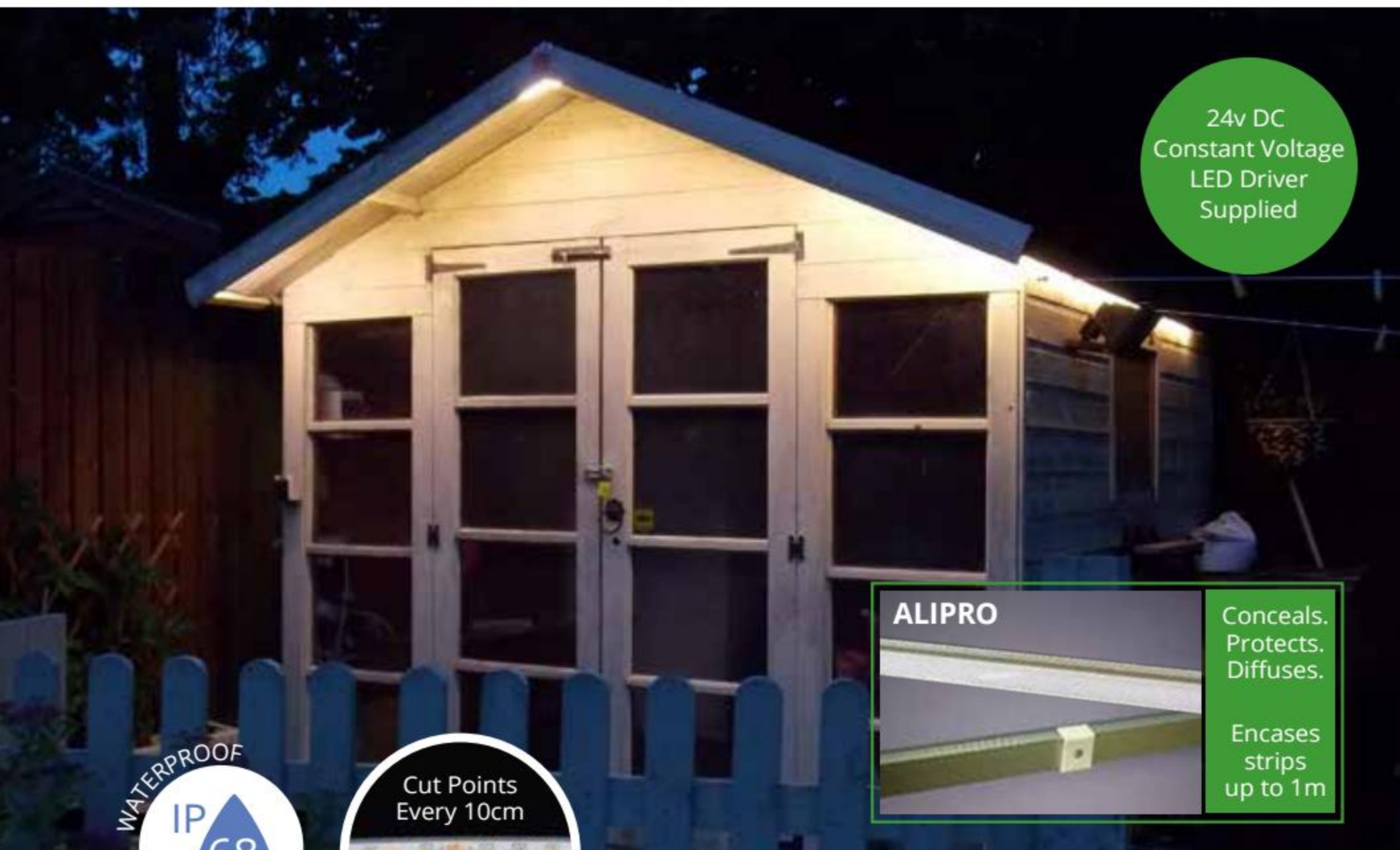
www.landscapermagazine.com



Lediflex Strip Light Kits



24v DConnect Plug & Play Strip Lights are fully waterproof (IP68) and available in 2m or 5m reels. Extension cables are available for modular installation.



24v DC
Constant Voltage
LED Driver
Supplied



ALIPRO

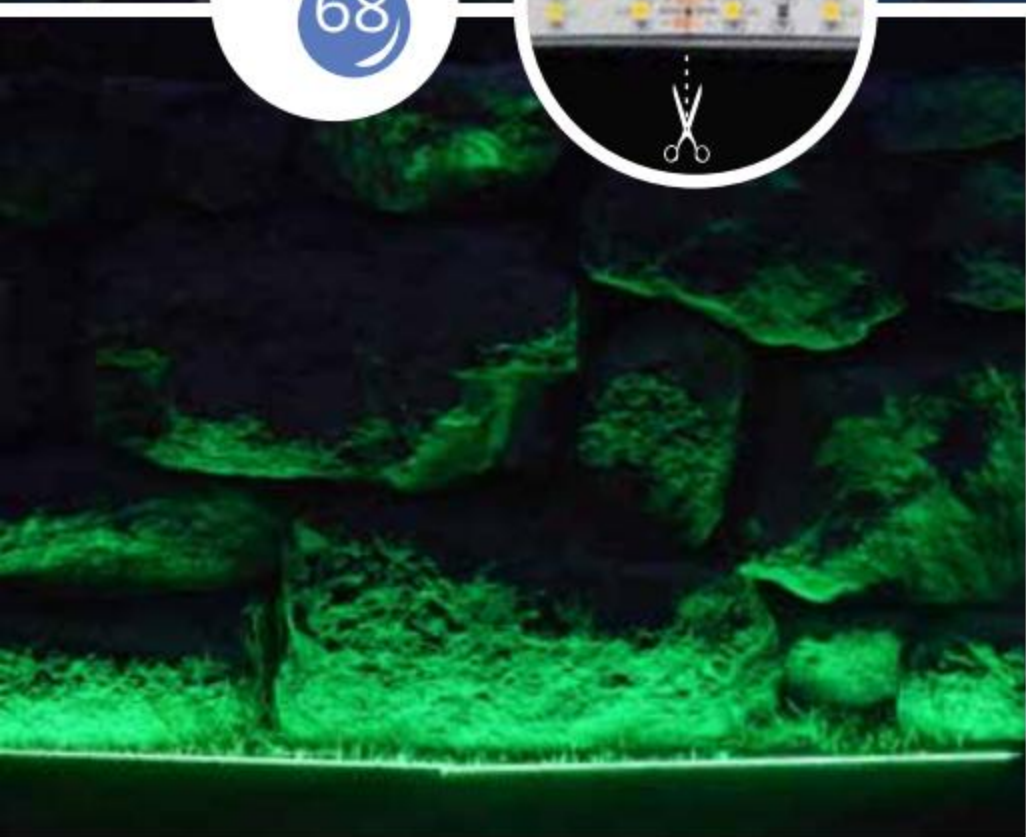
Conceals.
Protects.
Diffuses.

Encases
strips
up to 1m

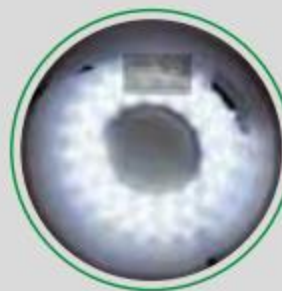
WATERPROOF

IP
68

Cut Points
Every 10cm



5 COLOUR VARIATIONS



Exclusive Trade Discounts // Next Working Day Delivery // Technical Team Available

www.lumenalights.com



Showroom Open: Mon - Fri (9am - 5pm) • Centre 33, Long March, Daventry, Northamptonshire, NN11 4NR

Showing the way

Trade shows are an essential part of our commercial lives. In a business environment where e-mail is the main form of communication, shaking hands with suppliers and customers helps us all to get a grip on industry trends, new products and services, and meet up with business contacts and old friends.

The Landscaper has always taken a very proactive role in these events – indeed for most of the shows the magazine exhibits and takes the role of media partner.

In this issue we preview two of the events with more show previews and reports planned in for future issues.

The Bloom Show in Dublin was a major success, the show gardens were outstanding and it seemed that the complete population of Ireland turned up with their children. Everyone enjoyed a day of education and fun.

Today, more than half of the world's population lives in cities. As the urban population grows and the effects of climate change worsen, our cities have to adapt. It's time for us to invest in efficiency and renewable energy, rebuild our cities and towns.

Cities need to accelerate their transition to a cleaner, healthier, and more economically viable future through improvements in efficiency, investments in renewable technology, and regulation reform.

The Danish capital ranks high on the list of the world's healthiest and happiest cities.

Copenhagen is developing a city where it is harder not to be healthy and environmentally friendly, with reduced air pollution thanks to initiatives such as the "green roofs". As part of its determination to become carbon-neutral by 2025, Copenhagen requires all new flat roofs to be planted with vegetation.

It is a fact that incorporating green

corridors, streets, parks and green space on buildings into a city boosts wellbeing, safety and prosperity.

As well as encouraging biodiversity, green space reduces heat and pollution and inspires people to walk or cycle. Green infrastructure can also alleviate flooding and provide resilience against the effects of climate change.

Our urban trees are pretty amazing. Not only do they provide a source of beauty and interest in the otherwise bleak urban landscape, they have crucial environmental benefits and give city-dwellers a place to relax, away from the stresses and strains of everyday life.

But our urban trees have come under increased threat in recent decades and we are now at risk of losing the lungs of our towns and cities. Every day hundreds of urban trees in the UK disappear; as a result of ageing, disease or simply increasing city sprawl. With 80% of us now living in urban areas, we now need our trees more than ever.

The chameleon-like Michael Gove, once sacked as Education Secretary for being viewed as "toxic", after a year in the political wasteland, has recycled himself to become an eco-warrior. In a hyperactive six months as Environment Secretary, while most government departments have been consumed by Brexit he has convinced green campaigners that he is one of their own. I'm not so sure they are correct. The words leopard and spots come to mind.



10-12 September 2018
NEC Birmingham



glee

Glee is the UK's leading garden trade event.

Build on your stores offerings this September with Glee's dedicated landscaping and garden decorations sector.

Find about more today at gleebirmingham.com

 [Glee_Birmingham](#)

 [Glee_Birmingham](#)

 [Glee.Birmingham1](#)

 [GleeBirmingham1](#)

editor / publisher

David Curtis
tel: 020 8891 4850
07780 967735 (m)
david@landscapermagazine.com

features

Carol Dutton
Ffion Llwyd-Jones
Claudia de Yong
Jana Silver
Liam Campbell
Tabitha Grammaticus-Smythe

commercial manager

Matthew Curtis
tel: 020 8891 4850
matthew@landscapermagazine.com

sales account managers

Richard Rowe
tel: 01233 228757
richard@landscapermagazine.com

Ben Rayment

01233 228752
ben@landscapermagazine.com

design and production

Lucas-studio.co.uk

multimedia and video

tel: 020 8891 4850
david@landscapermagazine.com

circulation and subscriptions

tel: 020 8891 4850
matthew@landscapermagazine.com

The Landscaper is owned and published by Curtis Media Ltd.

The Landscaper is an entirely independent magazine. It is not a member of any trade association or society.

Curtis Media Ltd

Fourth Floor
18-20 Hill Rise
Richmond
Surrey
TW10 6UA

Nothing in this publication may be reproduced without the written permission of the publishers. Readers intending to purchase goods or services from advertisers should make their own enquiries if in any doubt. Every endeavour has been made to ensure that all the information published in this magazine is as accurate as possible. Neither the publishers nor their agents can be held responsible for any errors or omissions; nor shall they be liable for any loss or damage to any person acting on the information contained in the magazine.

Copyright © 2018



29



44



52



37

June 2018

| | |
|-----------------------------------|-----------|
| Latest News | 06 |
| Dublin Bloom Flower Show 2018.... | 29 |
| Mowers..... | 37 |
| Hardscaper | 41 |
| Swimming Ponds..... | 44 |
| Arborist | 48 |
| Nursery Profile | 50 |
| Lighting | 52 |
| Horticulture | 54 |
| Profile | 62 |
| Plant Seeker | 64 |
| Next month's issue | 67 |

Understanding the products and market



Newly appointed BLEC dealer, Acorn Tractors from Derbyshire, recently joined forces with staff from Charterhouse Turf Machinery (CTM) for an in-depth training session on the BLEC range of specialist landscaping and turfcare equipment.

BLEC was purchased by Redexim almost two years ago and is a division within CTM. The range of specialised landscaping and turfcare equipment has been streamlined and re-engineered by the Redexim team. The day was the brainchild of Division Manager Curtis Allen to allow the combined staff to trial and test the range in the field to better assist and advise current and future customers. It featured a broad spectrum of

BLEC machinery, including the BLEC Cultipack Seeder, the BLECavator 145 compact stoneburier, Power Box Rake and Laser Grader 1500TPP. The Charterhouse team gained valuable time and field experience with machines for a variety of applications under the guidance of Acorn Tractors staff members who have been involved with BLEC products for many years. Curtis Allen said: "This was a great opportunity for the whole Charterhouse team to gain a thorough understanding of the products and this market sector. It was a day that all involved found very helpful and we'd like to pass our thanks onto Acorn Tractors owner Julian Simpson and his team for hosting and supporting the day."

Official BIGGA Partner

Bernhard and Company is an official British & International Golf Greenkeepers Association (BIGGA) Partner. It began working alongside BIGGA in 1998 and since 2002 has sponsored the annual BIGGA Delegation to America. Each year, 10 members are flown to the United States, where they go on course visits and educational opportunities, before representing both Bernhard and BIGGA at the GCSAA's Golf Industry Show. More than 150 BIGGA members have benefited from the opportunity.

A specialist in sports turf technology, Bernhard is committed to providing innovative turf care solutions to golf

courses and sports turf facilities worldwide.

Bernhard and Company Director Steve Nixon said: "We are very proud to have been involved with BIGGA for the last 20 years. As an education supporter and sponsor of the delegation for the last 16 years, we believe we have provided some fantastic opportunities to greenkeepers. We firmly believe in education, and with our approach to turf health, we are very keen to support BIGGA and the industry and help develop skills and knowledge on turf health solutions."

BIGGA Chief Executive Jim Croxton said: "Bernhard and

John Chambers®

WILDFLOWER SEED

High quality wildflower seed, prepared by hand and supplied to specification

John Chambers is a leading supplier of British native wildflower seeds, mixes and bulbs for every project and budget.

- **Heritage Range:** A portfolio of British native mixes developed and planted over the last 30 years. Renowned for quality and cleanliness of the seed.
- **Professional Range:** Seed for the professional installer. Includes mixes of more commonly found species to suit a wide variety of growing conditions.
- **Impact Range:** Vibrant and colourful seed mixes to create a feature of any landscaping project.
- **Conservation Range:** Carefully selected, balanced wildflower mixes that provide colour and food to attract desired wildlife, including bats, bumblebees and wild birds.

Wildlife and Insect Habitats

Create biodiversity on your projects with our new range of wildlife and insect habitats.



T: 01423 332 115

E: info@johnchamberswildflowers.co.uk

www.johnchamberswildflowers.co.uk



John Chambers is part of the Green-tech Ltd. family

Request your free sample
or Wildflower Seed
Selector today!



Bernhard: Steven Nixon (far left) and Stephen Bernhard (far right) with the BIGGA Delegation 2018

Company is a magnificent supporter of BIGGA members, not just through the BIGGA Delegation each year, but also by its commitment to education and innovation. We are hugely proud of our relationship with all our Partners and

grateful for the extraordinary support they provide for our membership. I'm delighted to welcome Bernhard and Company to the fold."

www.bigga.org.uk

Tree Health Resilience Strategy

Proposals to consult industry on new quarantine arrangements for high-risk plants are among the measures set out in a new Government's plan to protect the UK's trees.

Confor has welcomed The Tree Health Resilience Strategy, the first major publication to come out of the 25-Year Environment Plan, which sets out a new pro-active approach to tree health.

The new industry-wide Plant Health Alliance seeks to strengthen biosecurity practices, and brings together nurseries, retailers, tree suppliers, landscapers, foresters, the Royal Horticultural Society and Defra to ensure more effective and targeted action in response to threats such as Xylella and Emerald Ash Borer.

Caroline Harrison, Confor's England Manager, said: "This strategy chimes with our publication in January of Plant Health and Brexit, which called for imports of high-risk plants and firewood to end within five years to safeguard the health of UK forests. Confor has been part of constructive collaborative discussions about how best to protect our trees

from pests and diseases and we welcome this new strategy."

Launching the strategy, Secretary of State for the Environment, Michael Gove, said: "The UK has a global reputation for setting the high standards for biosecurity of plants and trees but there is no room for complacency. We must seize every opportunity offered by Brexit to strengthen our biosecurity. In 10 years' time I want to be able to say our oaks are thriving, that pests are being kept at bay and that our woodlands and forests are flourishing. Trees benefit our economy, society and wellbeing significantly and this strategy sets out how we will preserve them for generations to come."

Sir Harry Studholme, Chair of the Forestry Commission said: "Publishing this strategy is a critical milestone in our ongoing work to safeguard England's trees. It provides clear direction on how we can work collaboratively across sectors, to combat tree pests and diseases, to protect our beloved forests and woodlands for not only our current generation but for the future."

www.confor.org.uk

Defending dahlias

Dahlias are a favourite in Britain's gardens thanks to their amazing variety and colour. They are easy to grow and are suitable for planting in containers and borders, so they can be grown in any sized garden or patio.

The main problem, especially when the dahlias are young shoots, are pests such as slugs, caterpillars and thrips. The plants can be entirely decimated early in the season if preventative measures are not taken. A great way to make sure dahlias are protected is by watering on microscopic nematodes.

The Nemaslug and Nemasys range of products developed by BASF contains millions of beneficial nematodes that can travel through soil to where the pests are hiding. Slugs spend most of their time underground and nematodes can attack them before they are in sight, unlike when using pellets. A regular regime of using Nemaslug every six weeks is the most effective way to keep slugs at bay throughout the growing season and help ensure the dahlias survive another year.

Other common problems with dahlias are caused by thrips and caterpillars. Both like to munch through foliage and can

devastate a number of plants, fruit and vegetable crops in a short time. The key is to stay vigilant and keep an eye out for signs of damage. Nemasys Fruit and Veg Protection contains several different species of nematode, and each species targets a different prey, making this a fast and effective way to protect lots of plants from a wide range of common pests with one control.



The Chelsea phenomenon

Deco-Pak reported a sales increase in its Chelsea Garden Range during the RHS Chelsea Flower Show, as the decorative aggregates specialist announced its continued commitment to a three-day delivery turnaround.

Deco-Pak Director Rod Slater said: "Every year, we see a dramatic rise in sales in our Chelsea horticultural range of sands and gravel for the week during and following the show. So far in 2018, we've already seen across the board sales of this range shoot up by 15% YTD."

The reason behind the demand comes from the proven value of the product, he said: "Chelsea is a name synonymous with horticultural excellence, exactly the results we promise customers will see using our horticultural grits and sands. The repeat sales are proof the

product's price point is working, too."

In contrast to many larger suppliers, Deco-Pak announced its highest ever level of capability in supplying. Warehousing capacity and an expanded logistic network mean the company is turning around deliveries in as little as 24 hours.



Deco-Pak's Chelsea range includes a traditional top soil and peat-based balanced multi-purpose compost. The product is sold as a premium compost perfect for germinating seeds, growing on seedlings, tubs and baskets.

Other recent additions to the range include; alpine red flame, alpine white, alpine mix, alpine gold, traditional woodland bark and Lytag. Chelsea pea gravel, coarse grit, potting grit, silver sand and sharp sand products complete the range.

www.deco-pak.co.uk

Wildflowers: colour and value for money



At Goring and Streatley Golf Club, Course Manager Matt Aplin's strategy to improve the ecological footprint included sowing Euroflor wildflowers, which "attracted as many complimentary comments about the outstanding display of colour as about the quality and performance of our greens," he said.

"The course looked immaculate and was playing very well, so the wildflowers' display obviously made a massive impression," he added. "We even had non-playing visitors coming to see the display."

Since Matt was appointed Course Manager at the Berkshire club in 2015 – after joining the greenkeeping team as an apprentice 20 years ago – he has looked for opportunities to improve the course's ecological footprint. In 2017, he identified a rough area adjacent to the 14th hole that he wanted to improve. "I was bouncing my thoughts about the possible use of wildflowers off Gareth Acteson, Rigby Taylor's area sales director, and he suggested that the Euroflor mix (rather than native species) might work better in that spot," he explained.

"The Sarah Bouquet mix of annuals was chosen on the

advice of club member Joyce Gustard, who is renowned among the membership for the quality of the floral display in her own garden, and that was definitely a wise move because a few months after sowing the area was awash with colour."

Sarah Bouquet is a mix of 30 different species, including *Anethum Graveolens*, *Borago Officinalis*, *Callistephus Chinensis*, *Helianthus Annuus*, *Helichrysum Bracteatum*, *Lobularia Maritima*, *Lupinus Nanus* and *Rudbeckia Gloriosa*, and has a flowering height of 70-90 cms.

Adding that he uses a lot of Rigby Taylor products on the 18-hole, par 71 course, not least the R9 100% ultra-fine rye seed mix, Matt says: "We didn't do too much preparation for sowing the wildflower seeds and we undoubtedly over-sowed in terms of seed ratio, but the impact was tremendous from June right through to October.

"That success, and the number of favourable comments we received, has spurred us to double the overall amount of space sown with Euroflor wildflowers this year and because we have used less seed (perhaps just 65% of what we sowed last year on a similar-sized plot), we will effectively have double the amount of colour for a relatively low additional cost."

Matt recovered some of the cost of the outlay on seed by re-selling small Discovery packs (also supplied by Rigby Taylor) of the wildflower seeds. "After seeing the flowers, some members wanted the seeds for their gardens," says Matt.

At the end of the season Matt cut down the plants and left them where they fell, to encourage natural seeding. "In May, some of last year's seeds were 45 cms high", he said. "That's a result of using an annuals mix, and equates to real value for money."

www.rigbytaylor.com

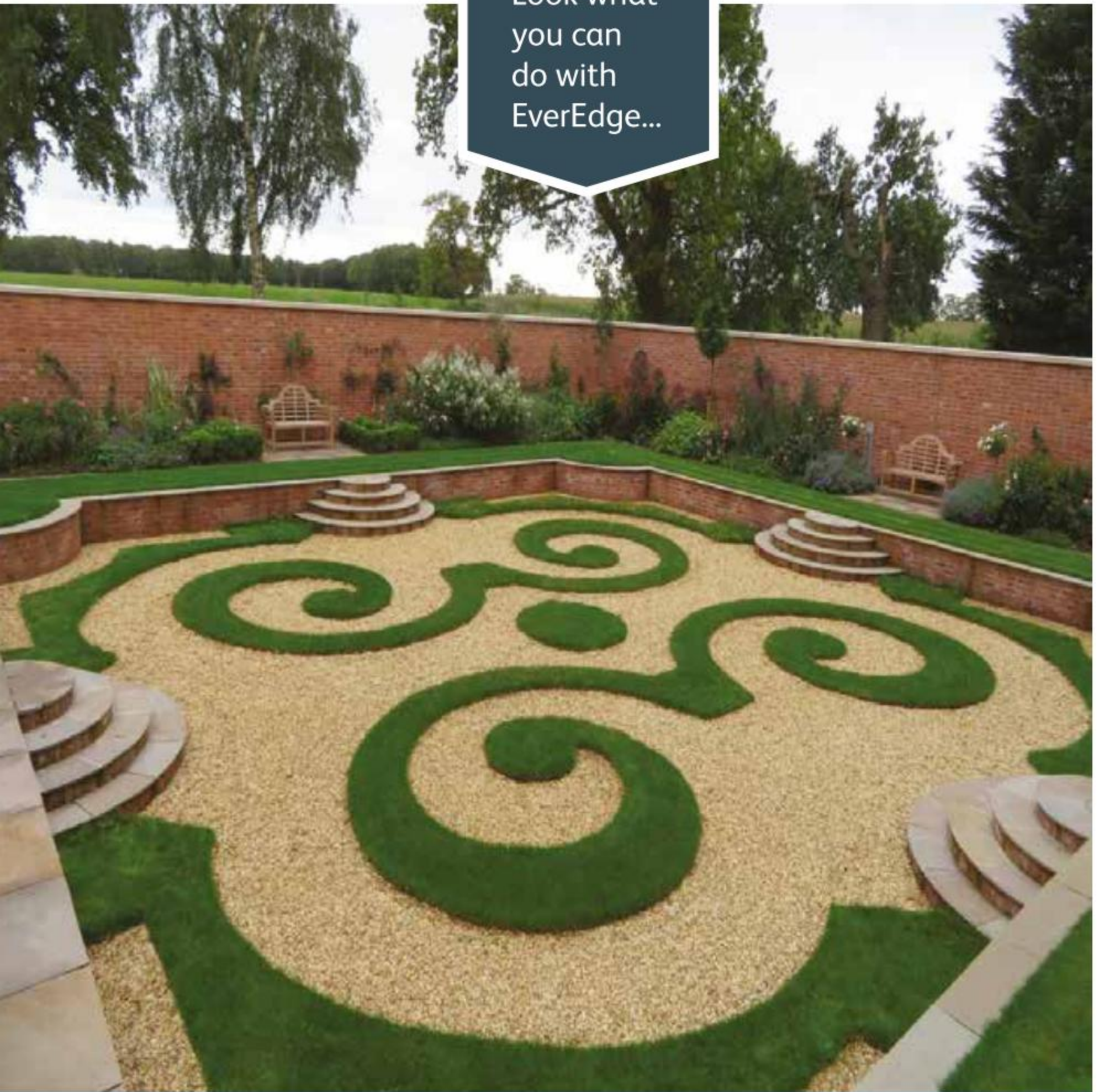


New Managing Director

David Hart is new Managing Director of Kubota (U.K.) Ltd.

He said: "Kubota has a deserved reputation as market leader in many areas. We have a big opportunity to grow further and continue to diversify into new sectors, bringing our strong business values and quality delivery to match the demands and rightly high expectations of our dealers and end user clients. Kubota's brand, values and proven quality are facets I have respected as a competitor over many years, and I am excited to be part of the team that will take these to the next level."

Look what
you can
do with
EverEdge...



Edging, rings and planters



See them all at www.everedge.co.uk



Follow us on Twitter @EverEdge

Först first

Bristol-based equipment- and tool-hire business Murray Hire Centres is expanding its long-standing fleet of Först woodchipper machines, impressed by the superiority and reliability of the machinery.

Established since 1982, Murray Hire Centres is a close-knit family run business, with 15 staff. With 600 account customers, the business has built itself a reputation as the best one-stop shop for equipment and tool hire in Bristol and the surrounding areas.

Mandy Taylor, Managing Director of Murray Hire Centres, said: "Numerous factors make the Först machinery stand out from other machines on the market. We've always felt that, paired with the consistent reliability and efficiency of the machines, their smart appearance makes them far superior against other competitors."

Murray Hire Centres has two TR6's, one ST6 and one TR8 machine, with another TR8 on order. Ideal for remote locations, the TR6 is a compact and manoeuvrable chipper with Först's unique ForstGrip feed-roller system, allowing for even the toughest forks and limbs to be broken.

Mandy continued: "We have reaped nothing but benefits



from having Först machines on our fleet. For the business as a whole, it's allowed us to offer a full circle of products to our customers. The robust machines have been used from general arboriculture work through to site clearances for large company extensions, and on housing estates.

"Despite it being a rarity to face an issue with the machines, the warranty and after-sales support offered by Först is superb, which really gives us faith in the products and provides us with the assurance we need as a business. Since day one, we have always had a fantastic relationship with Först, and we firmly believe that the machines are the best chippers available on the market."

www.forst-woodchippers.com

KING FEEDERS UK

SPECIALIST SHREDDING & COMPOSTING EQUIPMENT



www.ecogreencomposting.co.uk Tel: 01260 223273

Tracked mini-transporters

The new Ibea Mini Transporters, sometimes referred to as powered barrows, are a 'must have' for anyone wishing to move loads across rough terrain, up steps, over kerbs and around obstacles. Narrow enough to overcome access issues, most models will go through a standard doorway.

IBEA's mini transporters offer exceptional handling due to simple, straight forward, easy-to-understand controls, and

operators can be more productive and safer.

Models range from 300Kg-600Kg capacity, with options including hydraulic or manual tipping, expandable bed design and dumper bed. The machine is powered by Honda or Subaru industrial commercial engines, and made in Italy with a proven track record of reliability and robustness using reinforced steel crawler tracks.

www.ibeauk.co.uk

Longevity and nutrition



John Jennings, Course Superintendent at Castleknock Golf Club in Dublin, used to struggle with achieving longevity from fertilizers until he applied ICL's Sierrablen Plus Stress Control 15-5-22 +2MgO.

With a growing membership of approximately 900 members, Castleknock can see up to 40,000 rounds of golf a year played on the course. Generally, John does not encounter too many issues, but he does admit to a slightly problematic area on the fairways: "I have used many controlled release fertilizers over the years, and struggled to get longevity and colour due to the high sand content in the fairways. However, since I began using Sierrablen Plus fertilizers two years ago, it has become a game changer."

The fertilizer's Poly-S and PACE technologies have been scientifically proven to provide consistent feeding, enhanced longevity and a low-scorch risk. Furthermore, the small-sized granules allow for even coverage and equal nutrient distribution. These fertilizer products offer a wide choice of analyses for proper nutrient input for every growth phase of the turf, and John has certainly noticed significant improvements. He applied it to the fairways in September 2017 and despite the incredibly harsh winter, it was still having a positive effect in March 2018. John was

so impressed with the product that this year he applied Sierrablen Plus Stress Control to the tees and was pleased to see remarkable progression so soon – again in unfavourable weather conditions.

"I am extremely impressed with the early response and sward density achieved when using the product, giving uniform growth that lasts 6-7 months. I will continue to use it and would highly recommend it to anyone," he said.

www.icl-sf.co.uk

BIO-CHOPPER MIXER WAGONS

Capacities available
5 to 30 cubic

- Robust design
- Simple chopping mechanisms (2 augers, complete with star blade cutting against fixed counter blades)
- Trailed, electric, diesel and self-propelled versions
- Optional extras; conveyors, cranes, weigh systems etc
- 2008 RASE Silver Medal Award



2 TONNE TIPPING TRAILER

Optional equipment:

- Lights
- Hydraulic brakes
- Mesh extension
- Fitted sheets

Harry West (Prees) Ltd.,
Lower Heath, Prees, Whitchurch, Shropshire SY13 2BT

harrywest.co.uk
01948 840 465



Wheel gold at Chelsea



The Makita 18v LXT Brushless power-assisted wheelbarrow took some of the back-breaking labour out of Landform Consultants' inspirational garden builds at the RHS Chelsea Flower Show 2018.

Mark Gregory, managing director of award winning Landform Consultants Limited, together with his talented team, designed The Welcome to Yorkshire Garden in Main Avenue. It was awarded the Gold & Best Construction medals and the People's Choice Award. Landform also designed and constructed The Seedlip Garden in the Space to Grow area of the Show, which was awarded a Gold medal.

"Chelsea garden show builds are always an enjoyable challenge and we take them extremely seriously, so any help from Makita is very welcome," says Mark Gregory, now a twenty-one-time Gold medal winner. "This labour-saving powered wheelbarrow has helped to reduce much

of the pushing of a fully laden wheelbarrow. This is a very impressive piece of kit and a fine match for the greatest flower show anywhere in the world."

Designed principally to reduce the physical demands in the construction industry, the new Makita DCU180Z power-assisted wheelbarrow can carry 130kg of blocks on the tubular frame, or similar amount of ballast in the barrow bin option. Compatible with any of the Makita 18v LXT Lithium-Ion batteries, the Makita DCU180Z has soft start to ease the load away; constant speed control; twin LED driving lights and locking brake lever for maximum site safety. For site security, an individual ignition lock key is provided. The DCU180Z is a body-only machine with optional accessories that can include the pipe frame set or bucket frame option.

www.makitauk.com

N35.125
GRAFTER 
GREEN



Loaded with benefits.

Discover how the all-new
Isuzu Gafter Green can
work for your business.

Isuzu Gafter Green.
A proper little grafter.

www.isuzutruck.co.uk

ISUZU
TRUCK 

New master greenkeepers

Two members of the British and International Golf Greenkeepers Association (BIGGA) have achieved Master Greenkeeper certificates. Andrew Kerr, Course Manager at Surbiton Golf Club in London, and Anthony Girardi, Golf Course Superintendent at Rockrimmon Country Club in Connecticut, are the 73rd and 74th recipients of the Master Greenkeeper certificate.

To be eligible, BIGGA members must have been



Tony Girardi

working in the industry for 10 years, with three spent in a head greenkeeper, course manager or superintendent role.

Andrew Kerr, 39, was raised in County Antrim, Ireland, and hails from an agricultural background. He began his career working on

golf courses in Northern Ireland, before making the switch to England, finally settling in to the course manager role at Surbiton.

Andrew said: "I feel the Master Greenkeeper qualification is important for the industry as it highlights great work, knowledge and abilities in a small industry within a global scale. Each of the stages helped me push my own knowledge and develop excellent standards from a course and administration point of view, which I hope to continue to do now and in the future."

Anthony (Tony) Girardi, 49, has been in the golf business for 29 years, beginning his career as an intern while

attending the University of Rhode Island. He graduated in 1992 with a degree in Environmental Science and earned a role as assistant golf course superintendent at Woodway Country Club in Connecticut. After three years he became golf course superintendent at Rockrimmon Country Club, a position he has held for the past 24 years.

Tony said: "I had always heard of the Master Greenkeeper programme through the years, but it wasn't until I attended BTME in 2016 that I

became more aware of the certificate and what it entailed. You are never too old to learn, and in a very short two-year period, I can safely say that I have learned a great deal about course management from my peers in the UK and Ireland. The



Andrew Kerr

Master Greenkeeper process is an invaluable experience that allows you to grow both personally and professionally."

Stuart Green, BIGGA's head of member learning, said: "Congratulations to Andrew and Tony on becoming the latest recipients of Master Greenkeeper status. Our Master Greenkeeper certificate is now in its 28th year and yet only 74 golf course managers and superintendents from all over the world have made the grade, highlighting what an incredible achievement this is. Master Greenkeeper is a learning experience and I would recommend any golf course manager, who aspires to the highest standards, gives it a go."

www.bigga.org.uk

Yorkshire in Chelsea

Rolawn (UK turf and topsoil supplier) provided 60 square metres of Medallion Turf for the Welcome to Yorkshire 2018 RHS Chelsea show garden. Medallion was chosen as a high-quality, wear-resistant home-grown turf to complement the Yorkshire scene. The show garden was designed by Yorkshire-born garden architect and designer Mark Gregory, celebrating his 30th consecutive year at Chelsea.

Rolawn Managing Director Paul Dawson said: "We were delighted to support Welcome to Yorkshire by supplying Britain's finest turf to its display, and proud that it comes

from Yorkshire from a company that has been based in the county for more than 40 years."

Designed to be a visual feast, the garden aimed to stimulate the senses with the smells and tastes of the famous national park. Mark Gregory's vision also revealed woodland, lush pastures, varied plants and flowers, a cultivated cottage garden and a tumbling beck with dramatic fast flowing water. Pride of place in the garden went to a stone bothy, converted into a craftsman's creamery.

Garden designer Mark Gregory said: "Marking 30 years at the greatest flower show on earth was a significant



**Stock available for immediate dispatch
from our UK warehouses for all applications including
landscaping, sport, commercial and play.**



Trade prices starting at £7.50 plus VAT with further discounts available for volume orders.

More than 10 different landscape products available in full rolls and cut lengths.

Dedicated trade account managers and technical expertise from our installation managers.

All ancillary products and 18mm, 25mm and 35mm shock pad also available.



Contact us for more information on our range and to request your free trade sample pack

www.hitechurf.co.uk • info@hitechurf.co.uk • 01244 289 182

moment for me and what better way to celebrate than with a return to designing a garden inspired by the place that shaped me as a person? And with the Yorkshire theme running through it, what better turf to include than Rolawn's home-grown Medallion?"

Sir Gary Verity, Chief Executive of Welcome to Yorkshire said: "We were delighted to be back at the prestigious Chelsea flower show for the ninth year running, bringing a garden inspired by the stunning Yorkshire Dales to the heart of London for the whole world to see."

www.rolawn.co.uk



Effectively treat Leatherjackets



Leatherjackets are the soil-dwelling larvae of the flies commonly known as daddy longlegs. Daddy longlegs appear towards the end of August and lay their eggs within days. Once they hatch, around two weeks later, the inch-long, legless creatures begin to feed on grass roots and stem bases, devastating lawns and plants.

Nemasy's Leatherjacket Killer is a safe and effective way

to deal with a leatherjacket infestation, which can only be treated using biological methods. It is a natural product containing microscopic worms (nematodes) that seek out and kill leatherjackets. Nematodes attack the pest by entering natural body openings, releasing a bacteria that quickly and safely kills it. The nematodes then reproduce inside the dead pest and release a new generation of hungry nematodes, which disperse and search for further prey.

Tips include:

Apply between August and the end of October

Mix the Nemasy's with water (following the pack instruction), and apply immediately using a watering can or hose, to already moist lawns, when the soil temperature is above 10 degrees centigrade.

Immediately after application, water the grass well to wash the nematodes into the soil containing leatherjackets.

Keep the lawn well-watered for at least two weeks after application.

Recruiting to meet increasing demand

Green-tech recently welcomed four new recruits to its sales and warehouse teams, increasing the company's employees to 85.

The sales team is supported by James Webster, Gabriel Bradley, and Ben Simpson, and the warehouse and production teams were re-structured, with long-standing team member Sam Jackson promoted to Production Manager. Cameron Fyfe and George Barton joined the warehouse team, along with another new starter in early June.

Green-tech has experienced exceptional growth over the last three years. Managing Director Rachel Kay explains:

"Staff development and product innovation is key. We listen to our customers and deliver amazing customer service, getting it right first time every time. We continuously review costs, processes and products. We have a first-class team."

Chairman Richard Kay continues: "We set out ambitious growth plans in 2015. The build of our business park in North Yorkshire, offices and vast warehousing facilities gave us the infrastructure needed to achieve our ambitious targets. Our growth has been planned and we are on track to reach our goals by 2020."

Green-tech has a successful apprentice programme

**Outstanding
out front
performance.**



Kubota



**2 YEAR
WARRANTY
AS STANDARD+**

+ Conditions apply to 2nd year see dealer for details

F90 Series: When precision and consistency matters

The Kubota F90 Series deliver maximum productivity, precision and efficiency.

From fairways to highways, the Kubota F90 Series can be relied on for consistent and efficient professional grade mowing. With a choice of three models, these powerful out front mowers are packed with performance enhancing features including auto-assist 4WD*, hydrostatic power steering and a large, comfortable operator deck designed to make everyday tasks easier and more productive.

*N/A F2890E

www.kubota.co.uk

T: 01844 873190



For Earth, For Life
Kubota

running in conjunction with Craven College. The first two apprentices recently passed their courses and were offered contracts in the business. There is another apprentice in the dispatch department and the company has more apprentice positions planned for the future.

www.green-tech.co.uk

*L to R. Back row: Cameron Fyfe, Sam Jackson.
Front row: George Barton, Gabriel Bradley, James Webster, Ben Simpson, Rachel Kay with office pup Doris.*



Show Success at RHS Malvern Spring Festival

Rolawn's topsoils and mulches were used in five of the six Gold medal winning gardens at the 2018 RHS Malvern Spring Festival, plus with all four Silver-Gilts, and all the Silver and Bronze winners – 13 medals, plus another one for Bloms Bulbs, which won Gold in the Floral Marquee.

Each garden used Rolawn topsoils and mulches, with Rolawn's Medallion turf providing superb framing of the

gardens for judging, with the younger and thinner product rooting more rapidly than ever, ready in time for the show's opening.

Rolawn Sales & Marketing Director, Jonathan Hill said: "We were delighted to be asked by Malvern's organisers, the RHS and the Three Counties Agricultural Society, to support the show gardens. Working closely with many of the industries finest designers is an absolute pleasure. To witness first-hand the impact their creativity and build expertise has on visitors makes our involvement very worthwhile. An added bonus was to have numerous satisfied customers come to our stand and share their gardening projects."

Peter Dowle, owner of Howle Hill Nursery, awarded Gold and Best Construction for 'The Spirit in the Woods', commented: "I'm so pleased Rolawn chose to support the RHS Malvern Spring Festival. It's improving each year and Rolawn's involvement is further proof that it continues to attract more of the UK's market leaders. The jumbo Medallion rolls are an absolute winner at shows, with great quality, as always, and so quick to lay."

www.rolawn.co.uk



**SIGN UP TO BECOME
A TRADE ASSOCIATE**

**Nationwide
trade supplier**

**Free Delivery
on full rolls**

**Multi-Width
cut length Service**

**Artificial Lawn
Warehouse**

0800 917 8966

www.artificiallawnwarehouse.co.uk

Free annual Research Day dates

STRI Group's free annual Research Day event, hosted at its world-class facilities in West Yorkshire, will be on 19-20 September 2018. Greenkeepers, grounds staff, course managers, stadium managers and other sportsturf professionals are invited to attend the open days.

STRI researchers will present the latest trials and technology, sponsored by STRI's research partners. STRI's consultancy team will give attendees a guided tour around the STRI research grounds.

The event is supported by ICL, Syngenta, Sherriff Amenity, Bernhards, Aquatrols and MLR Sports, which invest in R&D projects to help improve the quality and management of sports surfaces.

Dr Christian Spring, Research operations manager at STRI, said: "STRI's research days are interactive and informative, and allow both greenkeepers and groundsmen to keep abreast of the latest developments and concepts in the sportsturf industry."



To book: enquiries@strigroup.com or call 01274 565131

Emergency Authorisation for soil pest control

An Emergency Authorisation has been granted for the use of the Syngenta insecticide, Acelepryn, for the control of Chafer grubs and leatherjacket on golf course greens and tees, horse racing courses and airfields. The approval was applied for by STRI, on behalf of and with support from the amenity industry.

Chafer Grubs and leatherjackets cause damage to turf through extensive feeding on roots, which can be severe in localised patches. Furthermore, extreme damage can occur when badgers, birds and other foragers root through turf in search of the grubs.

The Emergency Authorisation permits Acelepryn use in situations where there is an acknowledged instance of economic damage and where the product has been recommended by a BASIS qualified advisor.

With the loss of available control options independent advisors, ADAS, has calculated the economic cost of Chafer Grubs alone at up to £85 million a year for golf courses in the UK, from lost income and damage repair. The report also

GROUNDSMAN[®]

Leading by design

Turf Cutters

- Versatile with Exceptional Traction & Cutting Ability in All Conditions
- Sod-Cutting, Mole-Drain, De-Compact, Trench and Cable Insertion Blades
- Easy to Operate with Low Operator Hand-Arm Vibration Levels (HAV)



Turf Aerators

- Interchangeable Solid & Hollow-Coring Tines, Dethatch & Over-Seeding Cluster Tines
- Consistent Depth down to 12cm with Low Maintenance Crank Driven Mechanism
- Proven Reliability & Performance



Versatile
Reliable
Performance...



Tel : +44(0) 28 2766 7049
info@groundsmanindustries.com
www.groundsmanindustries.com



Chafer bug



Leatherjacket

highlighted that on the 40% of racecourses affected by the pest's damage, lost income could amount to up to £605,000 per course.

"Since the withdrawal of effective insecticides, economic damage from chafer grubs and leatherjackets has been of major concern to many of us," reported STRI Head of Research, Dr Ruth Mann. "Obtaining this Emergency Authorisation of Acelepryn enables us to manage the most damaging effects of these soil pests as part of an integrated turf management programme."

The UK Emergency Authorisation for Acelepryn has been granted from 7 June to 30 September 2018, to cover the key Chafer Grub and leatherjacket treatment timing. The Emergency Authorisation covers golf greens and

tees, horse racing courses and airfields, specifically where there has been a history of pest damage or a recognised risk of damage. In all instances the use of Acelepryn must be recommended by a BASIS qualified agronomist. The authorised label permits application at the rate of 0.6 litres per hectare, applied in 500-1000 l/ha water. Ideally Acelepryn should irrigated in after application. One application per year is permitted, with the latest time of treatment being 30 September.

Turf managers or owners who believe they have suffered economically damaging effects of Chafer grubs and leatherjackets are advised to contact their BASIS agronomist or ICL Area Manager in the first instance.

www.syngenta.com

Tivoli trading

Following completion of its acquisition of ISS Landscaping on 1 June, Tivoli (Tivoli Group Limited) is trading. Tivoli Group Limited is owned by private individuals as part of the Sullivan Street Partners portfolio of companies; Sullivan Street Partners also manage Orbis Protect, a vacant property security business.

As a well-funded independent business, Tivoli will cement its place as the UK's leading specialist grounds maintenance provider. The strategy is to continue to self-deliver grounds maintenance, landscape construction, arboriculture, winter maintenance and interior plants and floristry services to its public sector, defence and corporate clients across the UK. Investments in improved systems and processes will enable Tivoli to grow and build on the success it has achieved over the past thirty years.

In a representation of Tivoli's commitment to effective delivery and to sustainable best practice, the new



branding depicts a bee (a symbol of productivity and sustainability) within a flower (representing harmony and the environment).

Phil Jones, Managing Director, Tivoli said: "This is a new and exciting opportunity for the business to take hold of its independence and concentrate on what we do best which is to deliver excellence to our clients. Focused on our talented and committed people, our community spirit and our passion to create and transform our landscapes into safe,

functional and beautiful spaces, Tivoli will become a real force to be reckoned with."

Richard Sanders, Director, Sullivan Street Partners said: "We are delighted to have acquired the ISS Landscaping business via Tivoli. As an independent company focused on grounds maintenance we will build a market leading service for our clients and strive to be the best employer in the industry."

www.tivoliservices.com

Centenary Garden winner



Heather Appleton of Appleton & Co Design is the winner in a competition run by The Welwyn Garden City Centenary Foundation (WGCCF) for a Centenary Garden that will debut at the RHS Chelsea Flower Show in 2020.

Appleton & Co was chosen from a shortlist of four design teams including Mazullo + Russell Landscape Design, Richard Riddell Garden & Landscape Design and Williams & Towner Studio.

David Green, Chair of the Judging Panel, commented: "All the entries in the final judging phase were of a very high standard. Ultimately, we settled on a scheme that will catch the eye at RHS Chelsea Flower Show in 2020 and then successfully make the transfer to its new home in WGC. Warmest congratulations to Appleton & Co Design for an imaginative plan that will take root in its final location."

Heather Appleton, who has won multiple gold medals at RHS shows and whose gardens have twice been named 'best in show' said: "Opportunities to design and

deliver a Main Avenue show garden for the RHS Chelsea Flower Show are very rare and the Welwyn Garden City Centenary Foundation should be applauded for its time and energy in organising the centenary competition."

The competition launched in January 2017, organised in conjunction with the Society of Garden Designers (SGD) and was open to both members and non-members of the Society.

Sarah Morgan, Chair of the SGD said: "This initiative between the SGD and WGCCF provided an opportunity to celebrate the inextricably linked disciplines of landscape design and forward-thinking town development. I look forward to seeing the garden built at RHS Chelsea in 2020. Congratulations to Appleton & Co Design and to all the SGD members who participated in the competition."

The Centenary Garden is one of many planned events to celebrate 100 years of Welwyn Garden City and its innovative idea of healthy living.

www.wgccentenary.org

Best May sales ever

Wyevale Nurseries in Hereford, founded in 1930, reported its best May with sales up by 14%.

Adam Dunnett, Sales & Marketing Director at Wyevale Nurseries, explained: "After a very challenging start to the year, with sales affected by the long winter and adverse weather conditions, we will be in a positive situation year-on-year by the end of June.

"We revamped and increased our fern range last year, due to seeing a surge of interest for the plant, and this has paid off. We found this year that there has been a demand in both retail and amenity/garden design markets, which has definitely helped increase our sales. The late spring also meant we got several months' sales for ferns in one month.

"Early June sales have continued at record levels and it looks set to be another record breaking month. This is fantastic news and the sunny weather is certainly helping."

Wyevale Nurseries' team regularly introduces new, award-winning plant varieties.

Its main business is to supply garden centres, landscape contractors, local authorities, foresters and landowners with

a comprehensive array of trees, shrubs, hedging, herbaceous and specimen plants.

www.wyevalenurseries.co.uk



For all your compact tractor requirements from 21-74HP

Branson
TRACTORS



Awarded the prestigious 2017 GOLD award for tractor manufacturer by the Equipment Dealers Association (EDA)

t: 01789 774089 www.bransontractor.co.uk e: sales@bransontractor.co.uk

New linetrimmer model

The new Makita DUR189Z 18v LXT linetrimmer, which replaces the popular DUR184L model, has a 240 watt output brushless motor providing capacity to run the head at three selected speed settings. Having the motor at the drive head improves the balance of the machine and eliminates the loss of power through the traditional drive shaft where the motor is at the operator end of the machine. The Automatic Torque Drive Technology (ADT) means revolutions per minute are automatically increased from between 4,000, 5,000 and 6,000rpm according to the density of the weeds and foliage being cut, which allows for greater and improved energy saving, lower noise levels, optimum operation and user comfort. A speed indicator is on the control panel.

The model's operating weight is 3.3kg, including the LXT battery, soft-grip handle and forward-loop handle for maximum machine control. The bent pipe shaft is adjustable in length and the foldable wire guard helps reduce risk or damage to foliage, fences and ornaments. The smaller protector allows a better view of the 300mm cutting circle. Soft start, electric brake, reverse rotation and overload protection add to the efficiency of this new linetrimmer, which is available as a body-only model.

Makita's new DUR188LZ linetrimmer has all the features of the DUR189Z model, including ADT, with the additional advantage of a 2-part shaft so this model can be split in



two for easy transportation and storage; a trigger switch with lock-off lever and a multi-functional control panel with speed and power indicators. Again, this is a body-only model.

Makita's new DUM604Z 18v LXT grass shears replace the DUM168 model. Fast, powerful and handy, a compatible hedge trimmer attachment has a tool-less blade change. The shear has a double blade action, a cutting width of 160mm, and a 3-stage cutting height adjustment from 15 – 25mm for fine work. With an ergonomically designed soft-grip handle and weighing 1.8kg, including the battery, user comfort is guaranteed while low noise emissions will ensure Sunday morning peace and quiet for family and neighbours. This model is available as a body-only.

www.makitauk.com

No more Dry Patch

James Bledge, Course Manager at Royal Cinque Ports Golf Club in Deal, Kent, says he has successfully treated Dry Patch with monthly applications of Qualibra wetting agent.

Formed in 1892, Royal Cinque Ports is a Championship Links course situated on the narrow stretch of coastline between Deal and Sandwich Bay in Kent. The course has repeatedly suffered from Dry Patch even with previous wetting agent programmes, and James trialled Syngenta's Qualibra, distributed by ICL.

He said: "We are situated on sand with only around 3" of topsoil so infiltration rates are pretty high. We also lose a lot of moisture, sometimes up to 10% volume water content in a day. I'm a believer in doing a full year's trial with products, especially a wetting agent, because

I think you are wasting your time if you do anything less than that. You need to see it consistently throughout every month to see how it is performing and also just give it a chance. Because I haven't had much luck with wetting agents in the past, I was thinking that if it didn't work out then we would just try something else next year. However, at the end of the year I remember telling Darren Hatcher (ICL Technical Area Sales Manager for the South, London and the Channel Islands) that it was perfect."

James applied Qualibra to the greens, tees, approaches and fairways at 20 L/ha in March and continued with monthly applications until October. His goal was to optimise the use of water resources and move surface water down to maintain, firm, fast



PROBST: Your paving partner



Probst offers you practice-oriented innovative solutions for:

- paver installation
- slab laying
- kerb stone laying
- screeding
- manhole laying
- pipe laying
- laying and transporting of landscaping elements and much more...

Probst Handling Equipment
Phone 01952 292733, Fax 01952 290480
sales@probst-handling.co.uk



www.probst-handling.co.uk

conditions, as well as improving the playing surface quality for members.

"We wanted the greens to play firm and fast and Qualibra has been a big part of that," he says. "I also wanted to avoid the unsightly burnt off crests and lush valleys on the fairways and if you irrigate them the water just runs off the top. However, Qualibra reduces the surface tension and goes in from the very top. In June they were the perfect colour, consistently that transition between green and brown.

"I've got a guy who has been working here for 40 years and every morning he comes in at 3.30am and hand waters all of the greens before the golfers come out. He absolutely loves Qualibra and he says that throughout his time here it is by far the best wetting agent we have ever used. I really value his opinion as he's seen it all so we discuss at length what products would make his life easier when it comes to moisture control, on a links course it's one of the most important factors to success and that's why we don't sacrifice on quality.

"We are also definitely using less water now and we didn't have any Dry Patch last year - which was the first time in years. To me that was a huge success because it was one of the driest years on record."

www.icl-sf.co.uk

New trees for Somerset community garden

Specialists from Glendale were called in to help transform a community garden in North Somerset to make the space more accessible for residents and their children.

Cleeve Parish Council received a grant of £4,500 from the Bristol Airport Local Community Fund, which went towards making paths in the village's Millennium Gardens suitable for wheelchairs and prams.

A team from the national green services provider laid a new path, trimmed hedges and overhanging branches and planted three new trees: Hazel, Court de Wyck and King of Pippins.

John Diment, contract manager at Glendale said: "It's always a pleasure to be involved with projects that have such a direct impact on local people. Green public spaces are incredibly important to communities but it's crucial that they are easily accessible, for everyone to be able to make use of. We hope the villagers enjoy the new and improved Millennium Gardens and that the project will encourage and enable more people to come and use the space."

Jacqui Mills from Bristol Airport said: "We are delighted to support the Millennium Gardens project. It is an invaluable



asset in the centre of the village, providing local families the opportunity of enjoying a green open space with planting and landscaping that will encourage wildlife and wild flowers, now and in the future."

Alicia Fox, from Cleeve Parish Council, said: "Cleeve Parish Council were very grateful to Bristol Airport for their generous grant. The transformation to Millennium Gardens thanks to Glendale is excellent. We are really pleased that the garden can now be easily accessed and enjoyed by all. During the open morning we received many compliments on how the garden was looking."

Completion of the project was marked by local people making bug hotels and taking part in a nature hunt.

www.glendale-services.co.uk

CPD-accredited seminars

The award-winning industry trade show, LANDSCAPE, returns to Battersea Park on 18-19 September.

Supported by 40+ different key media titles and trade associations, LANDSCAPE exhibitors showcasing everything from lighting to outdoor structures to living plants and trees. Its CPD-accredited Seminar Programme will return at this year's show. Each session addresses current topics including 'Top Tips for Growing Your Business', 'How to Win at Show Gardens' and 'How to Manage a Project'.

Speakers include: award-winning UK garden designer Andrew Fisher Tomlin, Royal Horticultural Society's Sue Biggs, Landscape Associate Richard Curle, and garden designers Rachel Reynolds and Karen McClure.

The sessions will take place on Tuesday 18th and Wednesday 19th September in 4 Seminar theatres at Battersea Park. Admission is free to the show, including all seminars. Please see show details on pages 50-51.

www.landscapeshow.co.uk/register





FOR HIRE
 Call us today for more information

Telephone: 0118 940 1740
 Email: info@dbm-hire.co.uk Web: www.dbm-hire.co.uk

Registration for SALTEX 2018

Visitor registration for SALTEX 2018 is open at www.iogsaltex.com.

SALTEX 2018, Europe's largest annual event for groundscape professionals, takes place at the NEC, Birmingham, on 31 October and 1 November.

The new website provides improved navigation and functionality, allowing both visitors and exhibitors to access all the information they need in preparation for SALTEX 2018.

The site is compatible with many browsers and all mobile devices meaning that visitors and exhibitors alike will have easy access to the site and stay informed with the latest show news and exhibitor event previews. With over 230 exhibitors signed up to date, visitors to the website will see an extensive exhibitor list complete with individual profiles - each containing relevant information on products, services and show offers.

Visitors will also be able to find out more about new and exciting show attractions as well as popular features such as Learning LIVE - SALTEX's free and all-encompassing education programme; Outdoor demonstrations - which



take place directly outside the SALTEX halls 6, 7 and 8; the SALTEX College Cup - a national student-led sports-turf challenge; Pathology & Soil Science LIVE - allowing visitors to look in detail at the symptoms of some common turfgrass fungal disease problems; Ask the Expert - a team of 10 IOG regional pitch advisors providing free pitch care advice; the Job Clinic - a chance to receive specific career advice and find out all the latest job opportunities from industry expert Frank Newberry, and the Institute of Groundsmanship (IOG) 10th annual Industry Awards celebration.

SALTEX exhibitors will notice some improvements to the portal, which is an indispensable tool for maximising event presence and making connections with potential customers in advance of the show. All of the exhibitor forms, such as the Health and Safety Declaration and the Risk Assessment Form, have now all been digitalised, meaning that exhibitors can fill out the relevant forms online without having to print them off.

www.iogsaltex.com

Quickfire®

A new 2-way herbicide effective against a wide range of weeds.



headland
AMENITY PRODUCTS

Selective and cost-efficient weed control.

01223 491090

info@headlandamenity.com
www.headlandamenity.com

To advertise in The Landscaper



call Ben Rayment on 01233 228752

Whopping ten gold medals for Show Gardens at Bloom

Report David Curtis | Images Iain White

Garden designer Andrew Christopher Dunne from the coastal fishing village of Clogherhead in County Louth has been named as the overall Show Garden winner at Bord Bia's Bloom 2018 for his 'Sustainable Seafood Garden' in association with Bord Iascaigh Mhara (BIM).

Following a rigorous two-day judging process with an independent panel of expert judges, the award was announced as Bord Bia opened the gates on the 12th annual Bloom festival in the Phoenix Park, Dublin.

The Sustainable Seafood Garden tells the story of the journey from tide to table, of the fish and seafood that surround and inhabit this island. It boasts a large water feature with shimmering fish sculptures and an 'upcycled' fishing boat which doubles as a kitchen



The Sustainable Seafood Garden – designed by Andrew Christopher Dunne, sponsored by Bord Iascaigh Mhara (BIM)

**GOLD
MEDAL
WINNER**



No Limits – GOAL's Garden For Women – designed by Cornelia Raftery, sponsored by GOAL

**GOLD
MEDAL
WINNER**



Life is Rosé by Santa Rita 'Living la Vida 120' – designed by Alan Rudden, sponsored by Santa Rita

**GOLD
MEDAL
WINNER**



FBD Insurance's "Deep Play" Garden – designed by Niall Maxwell and Marina Andreeva, sponsored by FBD Insurance

**GOLD
MEDAL
WINNER**



Resistance, a garden for Trócaire – designed by Barry Kavanagh, sponsored by Trocaire

**GOLD
MEDAL
WINNER**



MAMMA MIA! HERE WE GO AGAIN – designed by Tünde Szentesi,
sponsored by Universal Pictures International Ireland



**GOLD
MEDAL
WINNER**

DLR Fernhill 'An Exercise in Sustainability' – designed by Ruairí Ó Dúlaing and Nicola Haines,
sponsored by Dún Laoghaire Rathdown County Council

Landscape

THE INDUSTRY TRADE SHOW

Tuesday 18 & Wednesday 19 September 2018 Battersea Park, London

The **LANDSCAPE** Show returns to Battersea Park in London on Tuesday & Wednesday the 18th & 19th of September 2018.

Over 200 manufacturers and suppliers, over 2,000 visitors and over 40 CPD accredited seminars.



**GOLD
MEDAL
WINNER**



Fruit Juice Matters Garden – designed by Kevin Dennis, sponsored by Fruit Juice Matters

**GOLD
MEDAL
WINNER**



The Greener Way for Fingal – designed by Fingal County Council and Institute of Technology.



A Different Outlook – designed by Oliver and Liat Schurmann, sponsored by Savills



More outstanding gardens...



The Sanctuary Upside Down Garden



The Enchanted Garden



Marie Keating Garden



The Growing Shed Garden



Super Garden



Our Ladys Hospital Crumlin

Razor cut

Richard Ayling, grounds manager at Merchant Taylors' School in Hertfordshire, recently purchased four Dennis Razors, one for the school's lawn areas and three for cricket pitch preparations.

Richard said: "We were looking for something that was fairly simple to use, had easy height adjustment and a nice balance. I took my staff to SALTEX in November last year to see what was on the market. We looked at various machines and drew up a shortlist. After a couple of demonstrations, we were all in favour of the Razor."

The site at Merchant Taylors' School totals approximately 280 acres, with 80 acres of sports fields on the main school site and 20 acres on the prep school site. The remainder is buildings, lakes, lawns and woodland.

The Dennis Razor encompasses the simple 'no tools required' click height adjusters for quick and easy operation, a feature that worked for Richard and his team: "Its ease of use is the best feature and I particularly like the click system on the height adjustment setting. The Razor was exactly the machine we were looking for."



The team uses the Razor eight to 10 days prior to a game, and Richard praises the machine's cut quality: "For cricket preparation we use the Razor to cut down to 3-4mm, but they are superb for trimming off the squares as well and they cut nicely at 15mm. Ultimately, they produce a fantastic finish on every occasion."

www.dennisuk.com

Savings on battery-powered mowers

Etesia UK offers savings on selected models in its Duocut range of green technology battery-powered pedestrian mowers.

The revolution in battery-powered equipment continues to sweep through the grounds care industry



and it is easy to see why – no emissions, low noise, low vibration, easy operation, reduced risk of fuel spills and fires, and lower maintenance requirements.

Etesia UK was one of the first manufacturers to bring battery-powered equipment to the marketplace, which enabled professional users to work for a full day on a single charge. The company invests more money in green technology research than it does in any other department and this, in turn, enables Etesia to continue to offer ever-improving grass cutting machines.

Four Duocut models are at a discounted rate:

- The Etesia Duocut 41 NACS battery-powered pedestrian mower, self-propelled three-in-one mower with a 41cm cutting width;
- The Duocut 41 NACTS push mower;
- Duocut 46 PACS and PACTS have 46cm cutting widths, with self-propelled or push options.

The spring and summer special offers include a discounted additional battery unit compatible with all four of the Duocut battery-powered models.

www.etesia.co.uk

Championing the SCAG SWZ



The SWZ is the model name for the SCAG pedestrian mower supplied in the UK and parts of Europe by STM Co Ltd – and few know these machines better than grounds maintenance company Hortech Ltd, as it has used SCAGs for 25 years.

Commercial Director Duncan Jones recently took delivery of four SCAG SWZs, and explained why SCAGs are so high on his specification list for work on industrial, gas and water utility sites:

‘The steeply angled sides on domestic reservoirs always present a challenge, and the SWZ with the twin-wheel option is a well-established and respected solution, as it effectively lowers the machine’s centre of gravity to keep it well placed on angles.’

The new machines are supplied with spark limiters.

Hortech has more than 40 SCAGs in its fleet, used throughout the year as they can be fitted with the STM snow blades.

www.st-mach.com

Multi-tasking mower

Billingsbear Park, in Berkshire, recently purchased a Ventrac 4500 compact tractor with a rotary Contour mowing deck, supplied and delivered by local dealer, GA Groundcare. The new combination will be used for multiple tasks across the family-owned nine-hole complex.

Martin Blainey and his family have owned the club since moving from Hertfordshire to the Billingsbear in 1996 and it is one of the oldest 9-hole courses in Berkshire, dating back to Victorian times. It was ploughed for the planting of cereals during WW1 and WW2, before being reinstated as a golf course to a design by Dr Martin Hawtree in 1989. Martin and Jacquie Blainey are now semi-retired and their son Greg and daughter Laura are now responsible for day-to-day operations.

Commenting on the Club’s latest purchase Martin Blainey said, “We initially purchased it with the Contour deck, which we are using on the semi-rough and surrounds, but have every intention of adding further attachments over time. The safety it offers around the banks of the lakes and the stability when we’re mowing the banking that separates us from M4 motorway, is superb. Our next purchase will probably be the Trencher, which will help us when we come to upgrade our irrigation system or run power cables to other areas on site.

“I’m convinced that this type of compact tractor and multiple attachment combination is the way forward for golf clubs similar to ourselves. Why buy different mowers for



various parts of the course, when you can have one power unit and a selection of attachments with the versatility to undertake numerous jobs, not only on the golf course, but around the entire property. Apart from the triple cylinder attachment, most of the accessories are under £10,000, so the cost of adding versatility to the course maintenance regime is very effective.”

www.ventrac.com

www.gagroundcare.com

Road-legal investment

At SALTEX 2017, Toro's LT-F3000 triple flail mower stood out from the crowd to Harlow Council-founded facilities management company, HTS Group Limited, and the company, which deals with grass cutting and landscape maintenance invested in two machines.



As Andrew Bradley, landscapes manager at HTS Group, explains: "The LT-F3000 not only stood out with its signature Toro red, but for looking professional and robust. After making some enquiries, it was clear that it would tick all of our boxes, too."

"Post-show, I got in touch with our local Reesink Turfcare representative, Danny Lake, who took me on a tour around the Spellbrook Toro Factory in Bishop Stortford. Seeing machines hand built before my eyes convinced me that for quality and robustness, Toro was the way to go."

Two LT-F3000 flail mowers join HTS Group's fleet of 19 grounds machines and replace a 12-year-old cylinder mower to maintain medium-sized open spaces across the Essex district too small for a tractor-drawn mower and too large for a rotary.

Another box ticked for Andrew is that the LT-F3000 is road legal. He says: "With most sites six miles away, and their proximity to busy roads making parking a nightmare, being able to drive our machines to jobs is a must. A bonus with Toro's triple flail is that it has a good road speed of 15.5mph. The wet spring has made grass grow like mad, but the flail mowers are chewing through it effortlessly. This would have been too much for our cylinder mower. The Toros, however, make light work of the grass and even leave a beautiful striped finish to really top it all off."

reesinkturfcare.co.uk

ETESIA

THE ETESIA RANGE OF PEDESTRIAN MOWERS

Unrivalled Cut and Collect in any weather.



The best cut and collect or mulch performance on the market.

The Etesia range of pedestrian rotary mowers sets the industry standard.

Available from 37cm-53cm cutting widths and push, single or variable speed options, there is an Etesia pedestrian mower for any use.

All this adds up to machines that are purpose built professional mowers for professional use.

Full product details at www.etesia.co.uk or put us to the test and contact us for a free onsite demonstration on 01295 680 120

Etesia UK *The Professional's Choice.*

Call 01295 680 120 • email sales@etesia.co.uk
visit www.etesia.co.uk

Etesia UK Ltd

Greenway House • Sugarswell Business Park
Shenington • Oxon OX15 6HW

Tel: 01295 680120 • email: sales@etesia.co.uk www.etesia.co.uk

Etesia UK @EtesiaUK EtesiaUK

DIGGA

**MACHINERY
ATTACHMENTS**

**LEADERS IN
EARTHMOVING & CONSTRUCTION
MACHINERY ATTACHMENTS
SINCE 1981**




**DRILLING DRIVES - AUGERS - ANCHOR DRIVES
TRENCHERS - WEARPARTS & ACCESSORIES**

LOCALLY BASED IN HUNGERFORD, BERKSHIRE

+44 (0) 1488 688 550

WWW.DIGGAEUROPE.COM - INFO@DIGGAEUROPE.COM

 FOLLOW US
ON FACEBOOK

DIGGA

Winner 'Best External Product'

Brett Landscaping's GeoCeramica recently won the 'Best External Product' category in the Housebuilder Product Awards 2018.

The panel of seven judges included Claire Curtis-Thomas, the CEO of the British Board of Agrément (BBA) and Dale Saunders, the UK Associate Technical Director of major housebuilder Taylor Wimpey.

Now in its sixth year, the annual Housebuilder Awards recognises innovation and excellence within the industry. With the Government policy encouraging communities to have a greater say in the design of new properties, it is becoming more important for companies to be recognised for their commitment to excellence and quality in housebuilding.

Brett Landscaping's GeoCeramica paving is a new product range that combines porcelain paving with a pre-bonded drainage mortar base. Traditionally, porcelain paving had to be installed using bound methods, which can be time consuming, costly and complex. With GeoCeramica, the combined porcelain and drainage mortar allows the paving to be installed using unbound methods (i.e. sand laying course and a narrow sand filled joint). Overall, this is a simple way of adding value and long-term benefit to the hard landscaping of someone's new home.

Steve Edwards, National Sales Manager – Contractor/ Housebuilder at Brett Landscaping said: "Brett Landscaping is incredibly pleased and excited to have won the Best External Product category at the Housebuilder 2018 Awards. Since we launched GeoCeramica last year, the feedback we've received from our customers has been very positive and encouraging."

Winners from each category are finalists in the Product of the Year category at the Housebuilder Awards 2018 in November.

www.brettpaving.co.uk



Traditional paving



Bradstone Edale is a gentle riven paving with smooth edges inspired by the stony footpaths seen on country walks. It's an affordable and traditional paving range that doesn't compromise on style or decorative appeal and is available in cream and grey.

www.bradstone.com

Pioneering new infill sand

Aggregate Industries new Pro Pitch Elite is an infill sand proven to have the best drainage rates available in the UK market.

Unveiled by the company's Garside Sands division, the Pro Pitch Elite infill sand has been specifically designed to include larger rounded particles to provide superior void space through the playing surface of synthetic sport pitches exposed to extreme weather conditions. The new product will be sold alongside the company's existing Pro Pitch 2EW sand.

The launch of Pro Pitch Elite comes as a recent study found that extreme weather conditions are having a detrimental impact on the UK's favourite sports. Certain areas of the UK experience rainfall at 300% of the national average, yet pitch design and infill materials do not reflect the variations. Pro Pitch Elite drains 25% faster than Pro Pitch 2EW.

Tom Wise, general manager at Garside Sands, Aggregate Industries, said: "With the UK experiencing six of the seven wettest years on record since 2000 and record-breaking wet winters in 2014 and 2015, it's no surprise that extreme weather conditions are a growing concern when it comes to the construction and maintenance of synthetic sports pitches."



“As such, this has spurred us into our laboratory to design and rigorously test our biggest product innovation in more than twenty years. As a result we can launch Pro Pitch Elite, the ideal solution for enhancing and sustaining sport facilities by ensuring playability all year round, even in areas of extreme rainfall.”

Independent lab testing found Pro Pitch Elite drained 116% better than the most popular competitor sand available, while the high-performance Pro Pitch 2EW sand drained 44% better than the same competitor sand.

Tom adds: “Due to its technical grading, ProPitch Elite has been proven to aid with effective drainage, even outperforming our market leading Pro Pitch 2EW infill sand, as demonstrated during robust lab testing. For sports clubs looking to provide first class playing surfaces, even in extreme weather conditions, this revolutionary solution will not disappoint.”

www.aggregate.com

Deep clean process

Ashton Playing Fields provides a sports and leisure facilities across its 50-acre site in Chigwell, Essex. Dan Sweetman, who has recently taken over as Centre Manager, was delighted to be greeted to his new



position by a spotlessly clean running track thanks to Replay Maintenance and their unique AquaTrax process.

Managed by Vision Redbridge Culture & Leisure (RCL), the in-house maintenance team for the facilities is shared between sites. “We have a team that can pick up the groundcare tasks we can’t take on ourselves,” explains Dan. “Anything above that is conducted by external contractors. We try to keep on top of the cleaning of the track, but it’s a high-wear surface, in use daily, so naturally you get a build-up of dirt and detritus over the months and years.”

Replay Maintenance was called in to conduct a deep clean. “Replay was first recommended to Vision RCL by UK Athletics, and having looked at the work they conducted at other tracks, we decided to call them in and we’re so glad we did – the result is amazing. The operator came in and just got the work done, and when he left it looked like a brand-new track had been laid.”

Aquatrax is a unique process, combining pressure washing and vacuum extraction. The machine applies pressure water jets to dislodge the dirt before a vacuum extraction system removes the dirty water to a tank on the machine leaving a clean surface, free of contaminants. First developed for the maintenance of polymeric athletics tracks, it has since been adapted to clean dirt and algal growth from unfilled or water-based synthetic pitches.

“With the packed schedule we run here, it’s important for us that maintenance work is conducted in a timely, and thorough fashion. More importantly we’ve had great feedback from the users, especially Woodford Green, who are over the moon with the condition of the track.”

All-weather practice

Huxley Golf was proud to equip practice facilities for another premier golf club this Spring.

Bearwood Lakes Golf Club’s forest terrain and woodland has evolved over centuries to create an inspiring golf environment. The Club has an indoor/outdoor practice facility, with a Mizuno custom studio and a 23-bay covered and outdoor driving range.

Huxley Golf installed premium all-weather surfaces throughout the new facility. Huxley Golf Premier Tee Turf 2 was laid in both studios and in the five 12ft x 18ft (3.6m x 5.4m) covered practice bays. To the front, a 12ft x 153ft (3.6m x 46.6m) outdoor driving area was created, also working with the company’s exclusive Premier Tee Turf. Surrounding areas



and pathways were finished with Huxley Golf Premier 20mm Leisure Turf.

Managing Director Carl Rutherford said: "We pride ourselves on providing world-class playing surfaces, maintained with exceptional craftsmanship and unparalleled attention to detail. That's why we chose to work with Huxley Golf on our stunning new purpose-built all-weather practice facility. This was an important project for us as it would not only increase the distance of the range, but also bring our practice facilities into line with standards across the rest of the Club. We are delighted with the result and look forward to welcoming members and their guests to experience it in the year ahead."

Huxley Golf's General Manager, Paul Chester commented: "This was a large and prestigious installation and one that amply demonstrates the adaptability of our surfaces, designed to exacting specifications for indoor and outdoor use. It took just a week for us to fit out the whole area ready for its high profile public launch – and for the delight of Club members."

www.huxleygolf.com

2018 Otterbine Contractor of the Year

Family business, Clearwater Pond & Lake Management, has won the 2018 Otterbine Contractor of the Year award.

The Berkhamsted, Hertfordshire-based team of four achieved the highest Otterbine sales figures by a considerable margin this year thanks to a passion for the brand, a drive to succeed, and support from Otterbine and its distributor Reesink Turfcare.

Clearwater owner, Tim Soane, says: "We are delighted to have won the award. It wasn't without hard work, but selling such great quality products really helps. I think when you believe in Otterbine as much as we do, you're half way towards being a successful contractor.

"A mention has to go out to Otterbine's Reg Varney, Reesink's Pete Newton, and Caroline Gilmore and Kevin Denton from the Reesink Parts department for all their support. We couldn't do it without their help – the latter especially, as they ensure we receive the correct orders on time."

When delivering high levels of customer service, Reesink's back-up support is another helping hand that is, Tim says, 'second-to-none': "Knowing help is always on hand gives us and our customers great peace of mind. Add the invaluable knowledge we gained from Otterbine water management and product training courses to that, and we can confidently deliver smooth projects from start to finish."

Reesink's National Sales Representative for Otterbine, Pete Newton, comments: "Clearwater is incredibly deserving of this year's award. It is a delight to work with them and reassuring to know how invested they are in the Otterbine brand."

Clearwater's highlight installation of year was at wedding venue Colshaw Hall in Over Peover, near Knutsford in Cheshire. Tim recalls: "The customer wanted a fountain in their lake for aesthetic reasons, providing a striking backdrop for wedding photographs. They have been delighted with the result. Then again, I haven't had a single customer who hasn't!"

As far as sales trends go, he notes: "The fountain units are always popular because they look so good. The bigger the better, they really capture the customers' attention."

www.reesinkturfcare.co.uk



The natural place to swim



A natural swimming pond needs much less maintenance than a conventional pool, as there are no chemicals to manage and the water does not need to be drained for cleaning and repairs.

Gartenart Swimming Ponds offer a range of specialist services in the design, construction and maintenance of swimming ponds. They provide a one-stop-shop from conception to completion, through to aftercare, and have designed and built over 150 swimming ponds and natural pools since 2004. They build ponds all over the UK as well as internationally.

Their speciality is the combination of three areas -

design, construction and technology. All the design and construction work is carried out in-house by highly-skilled and long-standing teams. On the technology side they work closely with the leading international experts in natural water purification to ensure that our technical expertise in producing clean, clear water is second to none.

In addition to designing and building original swimming ponds, they also carry out swimming pool conversions, as well as restoring and converting existing ponds and lakes. They also build natural pools without plants (also known by some as "living pools").

www.gartenart.co.uk



Four-day event, 14 exhibition halls

All lights are green for the 23rd GaLaBau, the International Trade Fair for Urban Green and Open Spaces, to be held in the Exhibition Centre Nuremberg from 12 to 15 September 2018. Some 1,400 exhibitors and 65,000 trade visitors are expected.

For the first time, the four-day event will cover 14 exhibition halls, with international companies displaying a complete range of products and services for planning, installing and maintaining gardens, parks and other green spaces.

The honorary sponsor and founding father of GaLaBau is the German Association for Gardening, Landscaping and Sports Field Construction, the Bundesverband für Garten-, Landschafts- und Sportplatzbau (BGL).

Stefan Dittrich, Director Exhibition GaLaBau says "GaLaBau 2018 will continue to grow. Thanks to immense demand, especially from the maintenance machinery segment, in 2018 we'll be adding yet another hall – hall 11 plus the entrance NCC West. But the Playground and Urban Design area will also be bigger.

"We're also especially pleased with the increase in

number of international exhibitors: at this early date, Dutch companies, for example, have already booked more than 50 per cent more exhibition space than in 2016. And we've already seen growth of more than 70 per cent in space booked by organisations from Denmark and the Czech Republic.

"A main attraction for decision-makers in the industry will be the "Garden of Dreams" in hall 3A. This space, which at the same time will be the BGL's exhibition area, will provide full-scale examples of various trends in gardening and landscaping. The installation, covering some 1,600 square metres, will offer visitors eye-catching, inspiring presentations of services and products. For example, one urban area will show a full range of all that the GaLaBau industry can do, with a high-rise backdrop, interior courtyard gardens, rainwater management, green façades and green roofs."

Makers of playground and leisure space equipment will no longer be limited only to hall 1. In response to growing international demand in the playground segment, a portion of hall 2 will also be set aside. Some 150 exhibitors



are expected to participate.

Planners and landscape architects should also include a visit to hall 3A as a fixed part of their schedules. One of the main presenters here will be the German Landscape Architects' Association, the Bund deutscher Landschaftsarchitekten (bdla). Its stand in hall 3A will highlight not just the profession of the landscape architect and planner, but the bdla itself as an organisation. Each day of the exhibition will have a different focus, set up with experts from both outside and within the association. And of course there will be no shortage of the popular construction discussions.

Golf course greenkeepers, managers and operators will find not just lawn maintenance machinery and equipment, but seed, substrates and innovative irrigation systems. Distributed among its various halls, GaLaBau 2018 is expecting nearly 150 exhibitors who specialise in installing, maintaining and managing golf courses.

A special communication area for tree experts

Professional arborists, climbers and anyone else interested in the topic will have a set meeting point at GaLaBau: the Tree Care LIVE area in hall 3A which is organized together with the trade journal TASPO Baumzeitung and Freeworker. It's a place for knowledge and conversation, experiences and networking on every aspect of what trees need.

Live mowing, digging and chopping will once again be



a feature outdoors on all four days of GaLaBau 2018. Some exhibitors, in addition to their stand, will be using the GaLaBau live demonstration area adjacent to hall 12 and along the Silbersee lake in the nearby Dutzendteich park to show off maintenance and earth moving machinery in action on real lawns and soil.

GaLaBau, the International Trade Fair for Urban Green and Open Spaces, to be held in the Exhibition Centre Nuremberg from 12 to 15 September 2018



Preventing re-growth in Yorkshire

Martin Lingard, Contracts Manager for Lowther Forestry, has reported that ICL's Ecoplug Max is helping him manage an extensive tree and shrub clearance project throughout Yorkshire.

Lowther Forestry – a nationwide forestry, landscaping and fencing contractor was established in 1979 and now has four regional offices. Over the years the company has significantly grown and prides itself on providing exceptional quality, value and sustainability to businesses and organisations throughout the United Kingdom.

Martin Lingard has been with the company for 19 years and after looking for an alternative to liquid glyphosate for stump control, he turned to Ecoplug Max – which he purchased through ICL distributor Green-tech.

Ecoplug Max is a patented tree stump control application method which delivers glyphosate directly into the tree stump, killing its root system and preventing re-growth. Each plug contains 300mg of granular glyphosate which are simply placed into holes drilled into the stump using the Ecoplug drill bit. The plugs are then hammered in forcing out the sides of

the plug, releasing the glyphosate into the phloem.

“We have been using Ecoplug Max for the past few years as part of a tree and shrub clearance project for the Environment Agency,” says Martin. Based on the work last year we have seen fantastic results - we’ve had no comeback or re-growth of willows.”



Ecoplug Max supports requirements of the sustainable use directive to minimise use of pesticides. With the glyphosate encapsulated inside the unit, it never gets in direct contact with anything else but the plant, in turn minimizing the risk of the operator coming into contact with chemical or chemical spillage. Furthermore, it also eliminates the risk of damage to surrounding trees and vegetation. Quite simply, it stays where it belongs – inside the plant.

“As a product, it is so much better than spraying the stumps,” says Martin. “The beauty of it, is that it is so easy to use – we just apply the plugs easily into the holes that have been pre-drilled. It is certainly more efficient as well; in the past when we were spraying, just a little bit of breeze would mean that we would have to stop and wait until it passed. We’re also not having to carry lots of liquid so it is ideal from that point of view. It is safe to handle as well because you have no risk of spillages.

“We work in environmentally sensitive habitats and by using Ecoplug Max there is no risk of drift or contamination of habitat and the product, when applied, is not at risk of wash off by rain or flood. There is also the added benefit of less handling on site of concentrated herbicide product.

“Overall, I would say that it is a very good product and one that I would not hesitate to recommend.”

www.icl-sf.co.uk

DANEQUIP uk Ltd

Tel: 01420 474600

www.danequip.co.uk



**Narrow Access
Pedestrian
Stump Grinders.**

Celebrating 25 Years

Stihl adds to workwear range

STIHL has expanded its range of high-visibility workwear that offers professionals the very best in comfort and mobility.

The new lightweight MS Protect cut protective high-visibility jacket and trousers -both available in different sizes – provide professionals with freedom of movement, and are ideal for a range of applications including arb, forestry and landscaping work.

The Protect MS jacket comes with two chest pockets as well as an outlet opening for harnesses on the back. The elbows and shoulders feature thorn protection and breathable ADVANCE cut protection has been included in the chest, shoulder, arm and stomach areas for improved ventilation.

Designed with ventilation on the back of the thigh and sturdy material at the knee and lower leg, the Protect MS trousers are the perfect accompaniment. With two side pockets, one back pocket, one tape measure pocket and kidney protection, the trousers offer professionals with a functional solution.



For end-user safety, the visibility of both the jacket and trousers fall in line with EN ISO 20471 protection class 2, and achieve class 3 high visibility when combined. Both products also meet class 1 EN 381 cut protection standards for further peace of mind. The trousers are a type A design, so they offer protection at the front of the leg.

www.stihl.co.uk.

01454 310 606 | www.murrayhirecentres.com

MURRAY HIRE

Family Run Business | DIY & Trade Welcome

Small Tool Hire & Sales • Safety Wear & Equipment • Skip Loaders • Floor & Edging Sanders • Horticultural Equipment • Chainsaws, Hedge Trimmers & Brush Cutters • Mowers, Shredders, Blowers & Pressure Washers • Micro Diggers Etc. • Ladders & Towers • Material Handling Lifts • Scissor & Telescopic Lifts • Mixers & Breakers • Carpet Cleaners



STIHL
MAIN AGENTS
SALES | SPARES | REPAIRS

NEW

Scan Me
For
Directions

CATALOGUE
AVAILABLE



• Forst 6" & 8" Chippers • JCB Mini & Micro Diggers • NiftyLifts • Hamm Roller
OUR HIRE FLEET IS CONSTANTLY UPDATED – DELIVERING "HIRE" EXPECTATIONS!!

01454 310 606

murrayhire@btconnect.com

Armstrong Way, Great Western
Business Park, Yate BS37 5NG

SHOP LOCALLY
ESTABLISHED SINCE 1982

**IF YOU NEED IT WE'VE
PROBABLY GOT IT!**

GREAT, HAPPY SERVICE

1st Class Delivery & Collection Service Available | Mon-Fri 7.30am-5.30pm | Sat 8.00am-1.00pm

LANDSCAPE returns to Battersea Park

The Award-winning, hugely successful industry trade show, LANDSCAPE, returns to Battersea Park for another year this September. Promoting a variety of the latest pioneering products, technologies and innovations to the very best Garden Designers, Landscape Architects, Contractors, Groundsmen, Facilities Managers and Local Authority Landscaping Professionals from across the UK and beyond.

Proudly supported by over 40 different key media titles and trade associations, LANDSCAPE provides a vibrant environment to select, source and network with contacts from across the industry. With exhibitors showcasing everything from lighting to outdoor structures to living plants and trees. We are also thrilled to announce that our industry leading CPD accredited Seminar Programme will also be returning in this year's show.

Industry Leading Seminar Programme

With some of the industry's key players lined up to speak, our well-acclaimed Seminar Programme is gearing up to be a real treat. Each session is CPD accredited and addresses

current topics that are integral to the industry including 'Top Tips for Growing Your Business', 'How to Win at Show Gardens' and 'How to Manage a Project' amongst many other inspiring titles. So there's something for everyone who's looking to learn.

We have carefully planned the Seminar Programme to include a representative from each sector of the landscaping world. Some of our esteemed speakers to mention are award-winning UK Garden Designer Andrew Fisher Tomlin, Royal Horticultural Society's Sue Biggs, Landscape Associate Richard Curle and key Garden Designers Rachel Reynolds and Karen McClure.

These sessions will take place both on Tuesday 18th and Wednesday 19th September in 4 Seminar theatres at Battersea Park. Admission is FREE to the show including all seminar sessions! Apply for a ticket online at <http://www.landscapeshow.co.uk/register>. There is no need to register your interest for seminars, simply turn up on the day. Make sure to check out [landscapeshow.co.uk](http://www.landscapeshow.co.uk) over the next couple of months for the latest announcements on who will be joining the impressive line-up this September.





KEY DETAILS

When: Tuesday 18th & Wednesday 19th September 2018

Where: Battersea Park, London

Who Visits: Garden Designers, Landscape Architects, Architects, Facilities Managers, Interior Designers and Contractors.

Website: landscapeshow.co.uk

Email: info@landscapeshow.co.uk

Phone: +44 (0)20 7821 8221

@LandscapeEvent

@Landscape.show

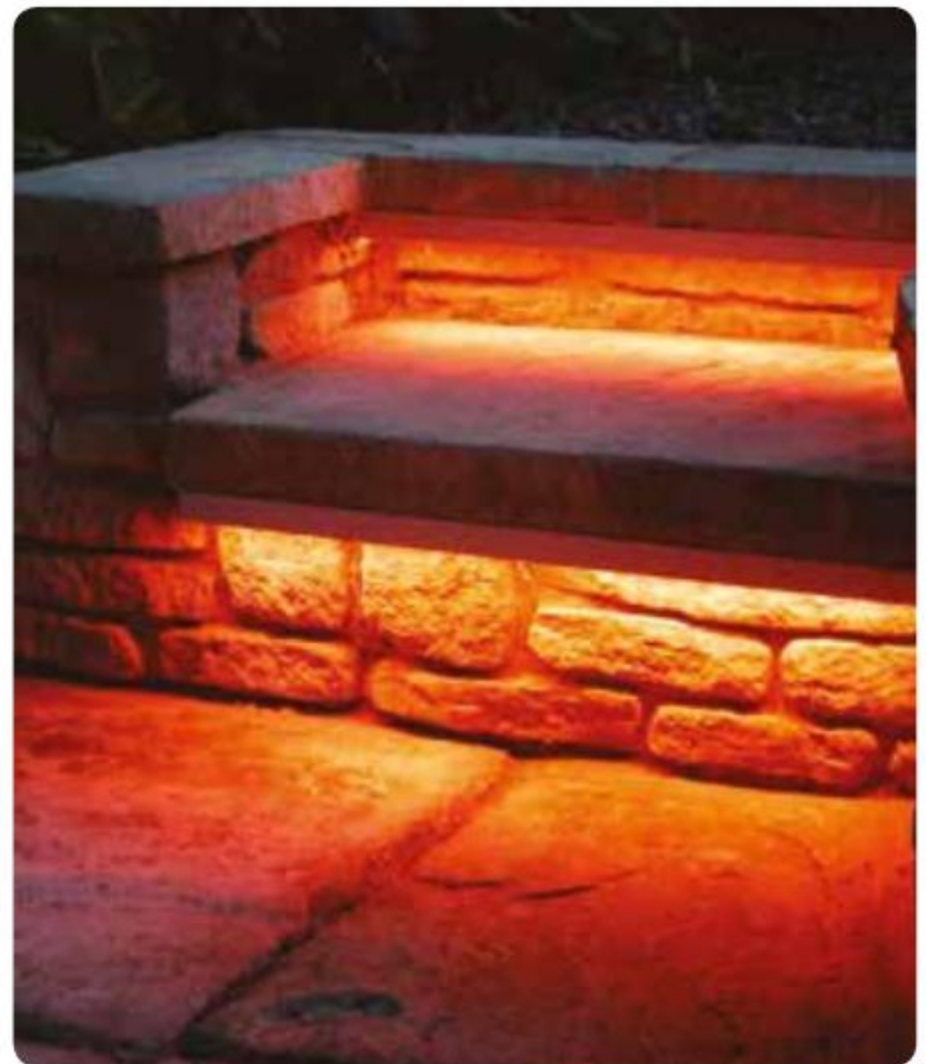
Special effects

Where a special lighting effect is required such as a wide spread of light compared to a spotlight, LED module lighting is ideal

Wall wash lights consisting of a 50cm long fitting with 12 x 1W LED modules create a wide spread of light; impossible using spike lights or floodlights. Equally LED strip lighting, available in various lengths up to 5 metres, is ideal for lighting steps or alcoves etc. These module LED lights use a separate 24v DC driver. Drivers are available in various wattages to cater for the numerous LED light options.

Twin output Drivers in higher wattages are particularly useful, allowing two runs of LEDs to be powered from a single driver. The use of DConnect Plug & Play Extensions Cables enables a more remote placing of the driver, further away from the fitting and out of sight, something which cannot easily be done unless LED module lighting is used.

Wall washers, such as the Litecast, are available in Warm or Daylight white as well as Red, Green or Blue. Generally these are ideal for larger applications such as uplighting trees and colour wall washing. The adjustable surface mounts enable the fittings to be mounting on almost any surface as an uplight or downlight, as well as via a ground spike. The streamline design results in little



protrusion when mounted on a wall and can easily be hidden within foliage. Green is great for enhancing the leaves of plants, shrubs and trees.

It's important to always use a weatherproof strip light kits such as the fully waterproof IP68 'Lediflex' by Lumena. Lediflex strip lights are also available in white and coloured options, as above. An added benefit is that they can also be cut to size (10cm intervals). Their compact, versatile design and the different LED colour options makes strip lighting an excellent choice for many applications, whether a small strip is required on a step, or longer strips are concealed in the shadows to create a colourful glow such as underneath benches.

www.lumenalights.com, sales@lumenalights.com,
01327 871161

Find Lumena on Facebook, Twitter & Instagram





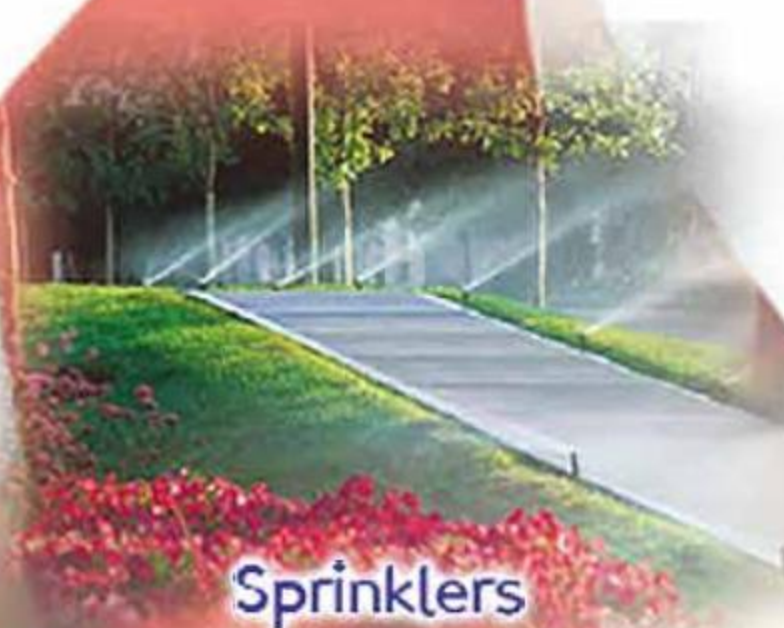
City Irrigation Ltd



The UK's professional suppliers of irrigation equipment for the horticultural, landscape, agricultural and sports industries.

Hunter[®]
The Irrigation Innovators

DAB
WATER TECHNOLOGY



Sprinklers

DOSATRON[®]



AUTOMATIC CONTROL PANELS



PIPES AND FITTINGS



Irritrol[®]

Get more done™



Philmac[®]

The connection you can trust.

Register for trade prices at WWW.CITYIRRIGATION.CO.UK

OR VISIT OUR TRADE COUNTERS AT
CITY IRRIGATION LTD, OAKLEY ROAD, BROMLEY COMMON, KENT BR2 8HG
TEL: 020-8462-4630 FAX:020-8462-3810 EMAIL: SALES@CITYIRRIGATION.CO.UK
AND
CITY IRRIGATION LTD, CHALCRAFT LANE, BOGNOR REGIS, W. SUSSEX, PO21 5TS
TEL: 01243 827178 EMAIL: BOGNOR@CITYIRRIGATION.CO.UK

Business rates success for growers

Legislation was introduced on 23 May 2018 confirming that ornamental plant nurseries will not be subject to business rates, and will continue to be exempt. The HTA, NFU and the Ornamental Horticulture Roundtable Group lobbied hard, after several nurseries highlighted the potentially crippling costs that rates could impose.

A court case in 2015 opened up a potential loophole in the law that would bring nurseries into line with paying business rates. The Government has decided this will not happen.

Garden centres and grower-retailer operations will continue to pay business rates.

HTA Director of Horticulture Raoul Curtis-Machin said: "We'd like to thank George Eustice and Defra for acting on our concerns. This will be a great relief to many of our members and non-member nurseries."

A factsheet about the Non-Domestic Rating (Nursery Grounds) Bill can be found at:

www/assets.publishing.service.gov.uk



Silver medal for volunteers

Volunteers who help restore and maintain the historic gardens at Derby College's Broomfield Hall campus won a silver medal for their exhibit at the RHS Chatsworth Flower Show.

Derby College head gardener Samantha Harvey said: "Our border is designed to celebrate the history and beauty of Broomfield Hall Gardens at Derby College and champion the work of our amazing volunteers."

The gardens at Broomfield Hall were created when the original hall was built in 1873 by industrialist Charles Schwind.

Best of both worlds

The British Association of Landscape Industries (BALI) has teamed up with the Royal Horticultural Society (RHS) and BALI Registered members to design and build a show garden, with support from horticulture and landscape students, at RHS Hampton Court Palace Flower Show (3-8 July).

BALI, through its education and careers initiative GoLandscape, is working with the RHS to promote students studying horticulture and landscape courses, and those undertaking work-based apprenticeships. Students from the South of England have been invited by BALI to help build the show garden, titled 'Best of Both Worlds'. They will be mentored by senior level landscaping professionals, including garden designers, landscape contractors and GoLandscape ambassadors, in a true demonstration of industry collaboration.

BALI's Education Officer, Stephen Ensell, commented:

"Now more than ever we need to unite under BALI's GoLandscape initiative to promote the many opportunities available to secure a rewarding career in the industry. There is no better way of doing this than by supporting and



encouraging our hard-working students and apprentices from across the industry at a nationally recognised event such as the RHS Hampton Court Palace Flower Show.”

He continued: “By demonstrating the skills and capabilities of our next generation and by allowing them to gain first-hand experience with a show garden build of this size and complexity, we are creating an insight into landscaping for potential students coming out of secondary education and to career changers.”

RHS Show Manager, Gemma Lake said: “We are thrilled to be working with BALI at RHS Hampton this year to bring an exciting show garden that will offer the opportunity for dedicated landscaping students to display their skills and craftsmanship. At the RHS we know how important it is to help support young talent out there and we’re looking forward to welcoming some of the very best alongside BALI to encourage and inspire others.”

www.bali.org.uk

Online budgeting tool

As the cost of living continues to rise beyond that of economic recovery, more people working across the UK horticulture sector are struggling to make ends meet, or are unable to put anything by for savings or emergencies. Perennial, the UK horticulture industry’s charity, has launched an online budgeting tool to help people understand their financial position and plan ahead.

Matthew Cooper, Debt Advice Manager at Perennial, says: “Creating a budget is important because it helps you understand how you are using your money and where your biggest expenditure is. Seeing this written down is the first step towards making changes to achieve a good balance between your income and spending. The tool also gives lots of tips for increasing your income and reducing your expenditure and point you in the right direction for further help.”

The new tool is available via the Perennial website

and can be used on a desktop computer, tablet or smart phone. It is very easy to use and does not require any technical or financial expertise. The information users input is confidential and will not be shared. People can use it anonymously if they wish or they can register to allow them to revisit their budget at any time and see how their planned changes are working.

Those with urgent debt issues can contact Perennial’s qualified debt advisers who can help by negotiating with creditors, preparing financial statements, advising on bankruptcy, helping with court paperwork and offering representation at hearings. In addition, Perennial offers direct financial help in some circumstances, including help for spouses/partners and dependent children.

www.perennial.org.uk/budgeting-tool

Perennial’s Debt Advice Service is authorised and regulated by the Financial Conduct Authority (www.fca.org.uk)



Celebration garden wins award

The John Deere garden, designed by Elspeth Stockwell and Jo Fairfax, and celebrating 100 years of tractors won a Silver Gilt medal at RHS Chatsworth Flower Show.

Elspeth Stockwell is a qualified horticulturist and medal-winning garden designer. Artist and sculptor Jo Fairfax develops lighting and sculptural installations and his work has won many awards. Both designers live in the East Midlands, near to John Deere’s UK & Ireland headquarters at Langar, Nottingham.

Platinum award for 'Solutions Garden'

Wyevale Garden Centres won a Platinum award, the highest award available, for 'Solutions Garden' at Gardeners' World Live 2018, the gardening consumer show held annually at the Birmingham NEC.

The Wyevale Garden Centres 'Solutions Garden', by award-winning designer Professor David Stevens, is a huge walk-through garden designed to show panicky planters stylish solutions to some of the UK's most common gardening problems.

With 31 per cent of British gardeners admitting to feeling guilty when their plants die*, long Latin names and a seemingly endless choice of plants which all require different conditions and care, gardening can seem overwhelming and confusing. The Wyevale Garden Centres 'Solutions Garden' solves many gardening difficulties in a thoroughly practical, easy to understand and elegant way.

Forty students from the Wyevale Garden Centres Horticultural Student Academy worked with Professor David Stevens on the build of the garden: "I'm delighted to have won a Platinum award for the Wyevale Garden Centres 'Solutions Garden'. Gardening doesn't need to be overwhelming or confusing – it's supposed to be enjoyable and the aim of this garden is to give our nation of panicky planters the confidence to take control of their outdoor

space. I hope it will help demystify many gardening questions such as planting in different soil types, tricky spots such as dry shade, dealing with weeds, lawn care and more."

Mark Sage, Head of Horticulture at Wyevale Garden Centres, says: "I was delighted to hear about the Platinum award for our 'Solutions Garden' at Gardeners' World Live this year. We wanted to work with Professor David Stevens to create this garden in direct response to what we know our customers need, which is practical solutions around common garden issues such as planting in shade, in alkaline soils and even things like dealing with weeds and lawn care. I hope this garden will boost the confidence of those that visit it and they are able to take away these tips to use in their own outdoor spaces."

www.bbcgardenersworldlive.com



Inspirational 'poetic garden'

RHS Hampton Court Palace Flower Show 2018 sees award-winning landscape and garden designer Edward Mairis revisit the 'poetic garden' genre he introduced at the 2017 show. This year, he has designed a special garden for the charity Limbcare – founded by the longest surviving quad amputee in the UK, Ray Edwards, MBE.

Unlike traditional garden design categories based on their aesthetic qualities, Edward's 'poetic garden' philosophy is about how the garden speaks to the heart. The garden can be any size, shape or theme and is judged by how the garden moves an individual. The Limbcare garden aims to offer a message of inspiration and hope to amputees and their families as they confront the challenge of accepting a dramatically changed future.

When designing the garden, Edward particularly picked up on the positive energy of Ray Edwards MBE. He states: "It

has been important to us to involve amputees in the creation of the garden. This will be another example of the way that Ray inspires and motivates other amputees, and I am delighted that a number of people Limbcare has supported have already signed up to help build the garden."

Aesthetically, The Limbcare garden is a wistful English garden, using the healing power of plants to create a haven for amputees to let go of their traumatic memories, let nature absorb difficult emotions and learn to think differently about what's important in life.

The Hampton Court Limbcare Garden is designed to create awareness of Limbcare's ambitious project to open a £3m Wellbeing Centre for amputees, to help them transition from hospital to home (<https://www.justgiving.com/crowdfunding/lenamos>). Edward's garden design will form an important central courtyard for those who visit the Centre.

Ray Edwards MBE, Chairman and Founder of Limbcare, says: "My personal journey from the rehab centre to home was hell. A 'halfway' centre to ease my frustrations and understand my disability would have been an incalculable help to me. That's why we're determined to use Edward's

Hampton Court garden to kick-start our crowdfunding campaign to build a Limbcare Wellbeing Centre. It will be a place where amputees and their families can use to support their journey from hospital to home."

www.justgiving.com/crowdfunding/lenamos



Enhancing London's Limmo Peninsula

Hampshire-grown wildflowers recently commuted to London, playing their part in the regeneration of Canning Town as part of London's ambitious Crossrail project.

A beautiful wildflower meadow supplied by wildflower experts Wildflower Turf Ltd caps a maintenance and escape shaft for the Elizabeth line on the Limmo Peninsula.

Overlooked by high-rise developments and next to the River Lee, the peninsula was Crossrail's primary worksite for their eastbound tunnel boring machines, and the area adjoins Canning Town Tube and Docklands Light Railway station. Working with landscaping partner Turney Landscapes Ltd, Wildflower Turf was commissioned by CSJV – the Costain Skanska Joint Venture responsible for the turning the former construction site into the permanent

Elizabeth line access shaft – to provide a biodiverse solution that will provide local workers and Canning Town residents with a temporary landscape that is aesthetically pleasing and ecologically friendly.

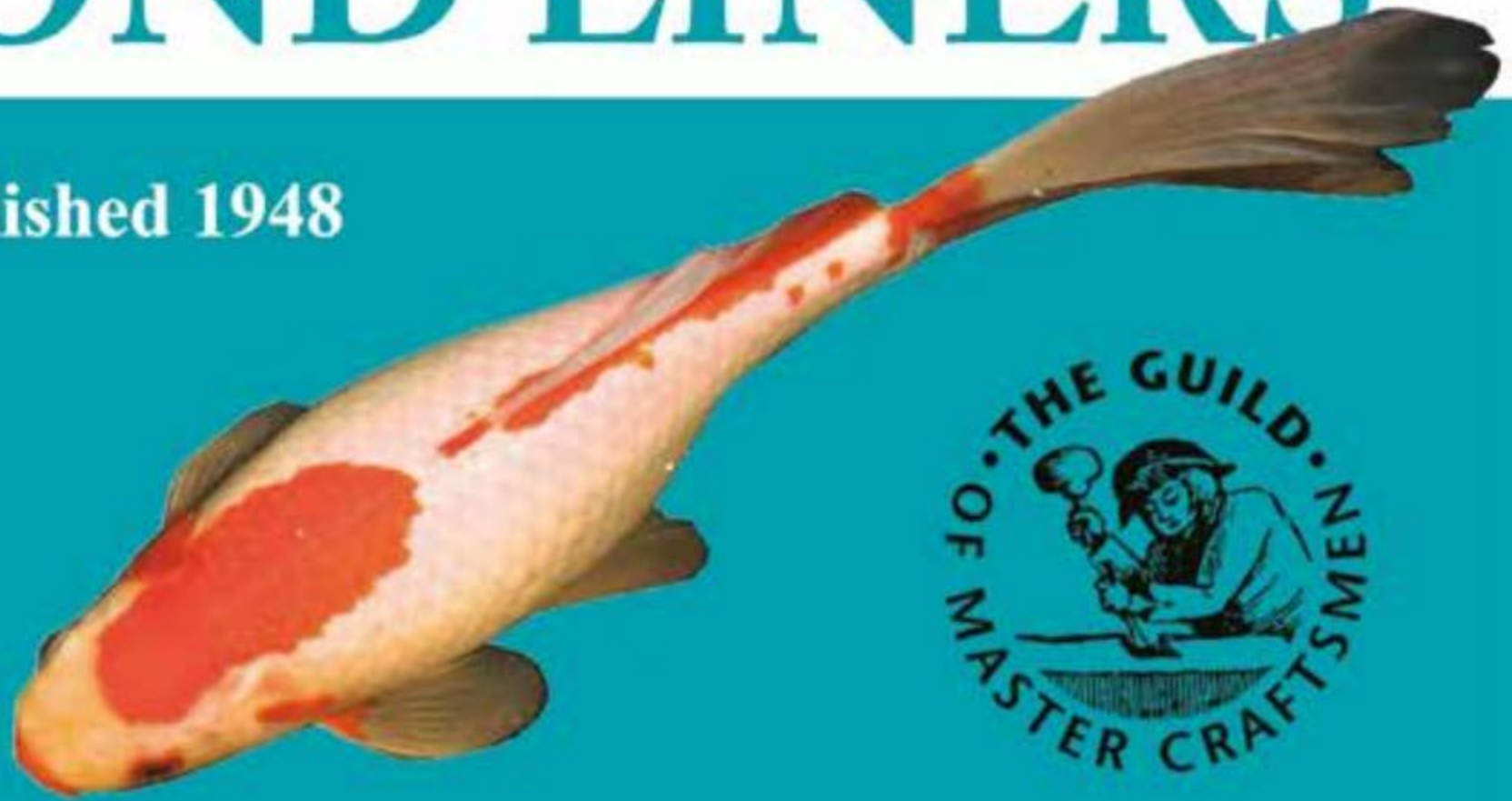
Turney Landscapes installed 2,600m² of Wildflower Turf Ltd's Roof Turf in March and April 2018, across and down the sloping 8-metre-high exit shaft.

Steven Turney, Director at Turney Landscaping Ltd said: "Working on such a large-scale and time-critical site as the Limmo Peninsula, it is crucial our suppliers can adapt to many and varied requirements. The team at Wildflower Turf Ltd assisted us to ensure this project was delivered on time and on budget, and the wildflower meadow is a dynamic addition to the local area."

www.wildflowerturf.com

FAWCETT'S POND LINERS

Established 1948



The top landscaper's first choice!

**Liners, pumps and filters
all at competitive prices**

FREE next day delivery on
all orders over £30

CALL 01772 612125

www.fawcettsliners.co.uk

Aerate, scarify and remove thatch

At more than 100 years old, Kent's St Augustine's Golf Club has changed a lot over those years and is now a long way away from the grazing land that once occupied its 60 acre site. However, the pop-up greens, on original clay soil, used to cause Head Greenkeeper Gary Kennington and his team a headache when it came to topdressing and drainage. That was until the club discovered the benefits of the Graden Contour Sand Injection (CSI) unit, which has helped to improve water dispersal and greens speed, all with minimum surface disruption.

"Though we're not strictly a links course, as there's a road between the club and the Kent coast, we do still have to deal with the climate challenges our location brings," explains Gary. "One year in particular, going back now seven years, the weather meant the usual tactic of tining and topdressing wasn't getting sand down into the greens as well as the team hoped. At the time, the Graden CSI was a relatively new concept in the UK so we hired a unit and quickly realised that it could really help."

The Graden CSI is a 3-in-1 verti-cutter with the ability to aerate, scarify and remove thatch to any depth between 1mm-40mm, whilst simultaneously backfilling the grooves with either sand or a combination of sand and seed. Its ability to conduct multiple jobs in one pass reduces play downtime without causing any detrimental effect to the firmness of the ground. "With this CSI you're getting the sand into the green, rather than putting it on the top, allowing you to get greens back into play in as little as half an hour."

Gary and his team now use the CSI on all 18 greens twice a year and continue to see marked improvements. "From the very first use we reduced the thatch content of the greens and worked the sand down into the soil profile which helped with drainage and greens speed. With it being a pedestrian unit, we have great manoeuvrability and it means we can still go out and use it in conditions that may not always be ideal. Should we need that little extra advice or support we have John Fitzpatrick of Charterhouse Turf Machinery."

www.charterhouse-tm.co.uk

SUBSCRIBE!

UK - £45.00 for 12 issues / £65 for 24 issues

Europe - £74.00 for 12 issues

Rest of the world - £87.00 for 12 issues



Please go to:

www.landscapermagazine.com

Then click 'Subscribe', leave your details and a member of our team will contact you



David Hodgson, groundsman and president at the Kirkstall Educational Cricket Club in Headingley, Leeds, believes more local cricket clubs would see significant improvements if they used a SISIS Rotorake TM1000 tractor mounted scarifier.

He is passionate about sports turf and particularly cricket, winner of a Yorkshire Cricket Board OSCA (Outstanding Service to Cricket Award) and commended by the West Yorkshire and Leeds branch of the Institute of Groundsmanship for his work in developing and presenting 'Understanding of Groundsmanship' courses to Yorkshire's cricket development groups and raising the profile of groundsmanship in the region.

When he is not tending to the pitch at Kirkstall Educational Cricket Club, David has a groundcare business and applies his expertise at sports clubs throughout Yorkshire. With his workload increasing, he felt it was time to invest in new machinery and specifically something that would make his end of season renovations easier.

"I'm getting no younger and I thought that instead of operating pedestrian machines it might make sense to have a tractor mounted machine. I have colleagues who have the Rotorake TM1000 and they gave me very good reports on it. I have known of SISIS for years and own a SISIS Variseeder (tractor mounted seeder), which has served me incredibly well for over twelve years now. As my business

developed I made the decision to increase my machinery stock to make my life easier – hence the purchase of the SISIS TM1000."

The SISIS Rotorake TM1000 is a tractor-mounted heavy-duty scarifier and linear aerator and is unrivalled in removing and controlling thatch. It includes a collector box and floating unit to follow ground contours and its contra-rotating reel throws debris forward ensuring a clean, consistent groove resulting in an excellent finish. With interchangeable blades and a quick, simple depth setting without tools, it seemed to be the perfect machine for David.

"I'm delighted with the purchase. The strength of the machine and the durability is excellent. I've used it for all of my recent autumn/winter renovations at around 25 venues throughout Yorkshire already. It's great for ease of use and I like the fact I can adjust the depth setting depending on the site and the level of thatch that is in the profile. It's a great feature to have and you can adjust it very easily without any tools. I have the scarification reel and the fraze mowing reel – which I think is absolutely brilliant. I'm also now looking at purchasing the brush for cleaning the squares during the playing season. Personally, I think that a lot of local cricket clubs would benefit from using the SISIS Rotorake TM1000."

www.sisis.com

Achieving consistent growth

On his third stint at the London, but the first in charge of the two internationally-renowned 18-hole courses, Lee has worked with Headland Amenity products for a number of years. "With Headland we cover both ends of the spectrum when it comes to plant nutrition – applying long-term, slow-release, low nitrogen-based products as a base feed topped up with sprays and feeds that go on the greens every 7-14 days. Short-term feeds give you what you need, when you need it and puts you in control of your plant growth."

"To get our feeding programme right, it's all about monitoring three major factors. Firstly, just looking at the plant – you can tell by the colour how healthy it is and what is required to sustain that. Secondly, monitoring the clippings. People may assume this is a luxury we can afford to do with the size of team we have, but in-fact it takes the guys just a minute per green to measure in litres how many clippings are taken off each green. Finally,

we have to keep a close eye on the weather - sometimes the biggest variable. Using this information, together with a little guess work to predict what may occur over the next 10 days, we will adjust our feeding programme accordingly."

With continuous monitoring, a feeding programme can be altered to ensure a balance between plant growth and health. Feeding too much will see a healthy plant, but one that grows too much slowing down the speed of the greens. Feed too infrequently, you can cut the greens less but can leave the plant vulnerable to disease.

He adds: "In a perfect world, you'd be running through the season with consistent growth but I've been in this game for a long time and it's still very hard to achieve! The London is always on a knife edge, but by putting our heads together and using advice available from companies like Headland, as well as making sure we're out monitoring the plants every day, we can take a step towards achieving that goal."



CREWS HILL WHOLESALE PLANTS LTD

Open: Mon-Fri 5am-3.30 Sat 5am-12 & Sun 6am-10



QUALITY PLANT
SOURCER & SUPPLIER
CONTINENTAL WEBSHOP
TRADE ONLY

Fully stocked 5 acre site 5 mins from J25 on M25

GET 15% DISCOUNT OFF YOUR FIRST PURCHASES WHEN YOU REGISTER AS A TRADE ONLY CUSTOMER

Parkview Nursery, Theobalds Park Road, Enfield, Middlesex EN2 9BQ tel: 0208 363 7411
email: info@crewshillwholesaleplants.co.uk - www.crewshillwholesaleplants.co.uk



PRO-FILE

Drainage & Irrigation

ACCESS
Irrigation



FOR ALL YOUR IRRIGATION NEEDS

Design and Advice
Irrigation Parts Catalogue
24/7 Online Parts Ordering

www.access-irrigation.co.uk

01788 823811

sales@access-irrigation.co.uk

SUBSCRIBE!

UK - £45.00 for 12 issues / £65 for 24 issues

Please go to the

www.landscapermagazine.com

Then click 'Subscribe', leave your details and a member of our team will contact you

Grass



RD100 + STH36 on Dingo



RotaDairon
OFTEN IMITATED
NEVER MATCHED

The Grass Group
professionals from the ground up

Interested in finding out more on any of these products or any others please don't hesitate to get in touch.

Telephone
01638 720123
Email
sales@thegrassgroup.com

www.thegrassgroup.com

Drainage & Irrigation

Buy online at
www.lws.uk.com

Lwsirrigation
YOUR ONE STOP SHOP

For all your golf, sportsturf and landscape irrigation needs.



Tel 0345 230 9697 • www.lws.uk.com

RAIN BIRD

CITY IRRIGATION LTD

The one stop shop for all your irrigation

Oakley Road, Bromley Common, Kent BR2 8HG

Tel: 0208 - 462 - 4630

www.cityirrigation.co.uk

South Coast Branch

City Irrigation Ltd. Chalcraft Nurseries,
Chalcraft Lane, Bognor Regis, PO21 5TS



To advertise
call Ben Rayment
on 01233 228752

MAKES SHORT WORK OF TALL JOBS



The HedgeMaster

▲ Lightweight, stable and very strong

▲ Guard rail around platform leaves both hands free

▲ Aluminium - will not rust or corrode

The Perfect Platform for Hedgecutting

Send for FREE information pack:

01825 872256

info@laddersafetydevices.co.uk

www.hedgemastersales.co.uk

Rainbow Plants

Rainbow Plants specialises in the production of hardy nursery stock in pots from 15L up to "instant gardening" specimens in 250L pots.

It's a one stop service for landscapers and commercial clients looking for evergreen or deciduous shrubs and trees. We can also source roses, herbaceous plants, climbers and conifers from specialist nurseries that we work with and larger specimens from Italy.

Grown in Devon for South West conditions.

visit the web site for more details about the nursery.

01404 814847

sales@rainbowplants.co.uk

www.rainbowplants.co.uk



Nurseries

FARNHAM COMMON NURSERIES



Crown Lane
Farnham Royal
Nr Slough
Bucks SL2 3SF
sales@fcn.co.uk
01753-643108



www.fcn.co.uk

Trees | Shrubs | Hedging | Specimen shrubs | Herbaceous | Bamboo
Grasses | Ground cover | Bulbs | Climbers | Compost | Topiary

Classified



f Glendale Horticulture
 v Glendale_Hort

UK GROWER

SHRUBS, HERBACEOUS,
 BEDDING, TREES & GRASSES

Operating from twelve sites across the UK, Glendale Horticulture supplies a wide selection of plants including trees, shrubs, herbaceous perennials and bedding plants for the landscape market.

With over 100 years of combined trading experience through our nurseries, Glendale Horticulture is ideally placed to offer quality plants and expert advice for your projects.

Contact us today to discuss your plant requirements on **01704 895014** (North) or **01732 770999** (South) or visit www.glendale-horticulture.co.uk



Supplying the nation's favourite multi-purpose geotextile

Nationwide Delivery

- Ground protection Geosynthetics and Geotextiles: Terram 1000 and Terram 1500 to 4000
- Ground reinforcement products: Bodpave 40, Bodpave 85
- Ground stabilisation and tree root protection system: Terram Geocell



T: 01423 369732
 E: sales@terramdirect.co.uk
www.terramdirect.co.uk



APPIN-WOODS MACHINERY LTD.
 Tel: 08703 210256 / 07850 210256
 Little Walsingham, Sudbury, Suffolk CO10 0SY
 E-mail: charles@awmachinery.co.uk

RABAUD—FENCING & FORESTRY MACHINERY INC.
 Post Drivers and Wire Machines etc.

Post Pointers Post Peelers Log Splitters

Wire Rewinding

RABAUD FIREWOOD PROCESSORS
 320, 400, 420, 550

WOODS Heavy Duty Scrub Cutters / Mowers / Trappers

80 TONNE SPLITTER

Brushroll Single Spindle Mowers (48" - 84" Cut), Multi Spindle Mowers, Rearmount Mowers, Turf Blowing Mowers, Heavy Duty Blowing Mowers

www.rabaud.com
www.awmachinery.co.uk

MICROPLANT

08703 210256 / 07850 210256
 E-mail: charles@microplant.net
 Website: www.microplant.net

Mini Tractors
 Mini Loaders
 Skidsters
 Mini Diggers
 Post Hole Borers
 Hyd' Post Drivers
 Trenchers
 Rotavators
 Stoneburiers
 Power Rakes
 Harrows
 Mowers
 Logsplitters
 Firewood Processors
 Etc.

Fencing, Landscaping, Paddock Maintenance & Forestry Machinery

Hydraulic post driver—either centre mounted or offset behind tractor. Also available mounted on Weidemann loader

PLANT SEEKER

Cheshire

FOUR OAKS
Cash & Carry



'One Stop Shop'
for Plants & Sundries

Young Plants of Bedding & Basket Plants
Alpines & Perennials - Trees & Shrubs
Mediterranean Plants - Specimens
Range of Sundries

Catalogue on request & on-line

Lower Withington, Cheshire SK11 9DX

Tel: 01477 571797 Fax: 01477 571314

Email: simong@fouroaks-nurseries.co.uk

www.fouroaks-nurseries.co.uk

ABCDEFGHIJKLMNQRSTUWXYZ

Kent



For all your plants
Live availability & discounted
on-line orders
phone: 01233 813340
e: sales@palmstead.co.uk

Lancashire

WHOLESALE
Bulbs, Plants,
Shrubs,
Roses

J PARKER DUTCH BULBS
15-16 Hatfield Street Old Trafford
Manchester M16 9FG
Tel: 0161 848 1124
Fax: 0161 877 0602
Email: wholesale@jparkers.co.uk
ABCDEFGHIJMOQRSTUW

Lincolnshire

D&R Simmons Ltd



Suppliers of all types of flower bulbs,
nursery stock & Christmas trees

Tel: 01775 723320
Fax: 01775 760451
www.drsimmons.co.uk
sales@drsimmons.co.uk

45 Market Way, Pinchbeck, Spalding, Lincs, PE11 3PE.

London

Rochfords
Nursery Stock
to the landscape
industry

Tel 01707 261 370 Fax 01707 262 847

sales@rochfords.net

www.rochfords.net

ABCDEFGHIJKLMNQRSTUWXYZ

Surrey

W.Godfrey & Sons Ltd

Wholesale Herbaceous Growers

We grow and supply herbaceous
plants and related groups to the
landscape and plant centre trade



CALL (01276) 471757

Home sales@wgodfrey.co.uk
Grown www.wgodfrey.co.uk

PLANTS LIMITED

Tel: 01276 855855
Fax: 01276 855055

Woodcock Lane,
Chobham, Woking,
Surrey GU24 8TS

web: www.plants.co.uk
email: rachel@plants.co.uk

ABCDEFGHIJLMOSTWXY

dingleydell
NURSERIES

? We have nearly
four acres
of covered
cash & carry!

Dingley Dell Nurseries, Windlesham Road,
Chobham, Surrey GU24 8SP
T 01276 857181 www.dingleydell.tel
ABCDEFGHIJQSW

CGJ Mathias & Son
(Nurseries)

**Hedging Conifers
and Laurels**

Farnham, Surrey

Tel: 01252 714552
sales@mathiasnurseries.co.uk

Lawn Edging

FLEXIBLE STEEL EDGING THAT BENDS
TO VIRTUALLY ANY SHAPE



Tel: 44 (0) 1453 731717 www.everedge.co.uk

Sussex

Saxon Plants
01323 763355 Wholesale

CASH & CARRY
ON-LINE ORDERING

SPECIALIST GROWERS OF
HIGH QUALITY HARDY PLANTS
PERENNIALS AND BEDDING

DELIVERY AVAILABLE TO
SOUTH EAST ENGLAND

Horsham Road, Pevensey, East Sussex, BN24 5AP

01323 763355

www.saxonplants.co.uk

Nationwide

READYHEDGE

**READY
WHEN
YOU
ARE.**

01386 750585

Worcestershire

Established over 25 years
Suppliers of:
**EVERGREEN /
TRADITIONAL
HEDGING
PLANTS,
ORNAMENTAL
CONIFERS & TREES,
SHRUBS & HEATHERS**

FARLOW FARM NURSERY
ORETON, CLEOBURY MORTIMER,
KIDDERMINSTER, WORCS, DY14 0TZ

www.farlowfarmnursery.co.uk
Email: sales@farlowfarmnursery.co.uk
TEL/FAX: (01746) 718688

Nationwide

Plants by Zion

Supplied nationally - lawn edging,
railing planters and more.

info@enviro-gardening.co.uk
www.enviro-gardening.co.uk
01630 673860

**WHOLESALE PLANTS
FOR UK DISTRIBUTION**
TEL. 0845 6522789

(Agents for Growers Internationally)
ALL PLANTS SUPPLIED FOR:
WHOLESALE/RETAIL OUTLETS
LANDSCAPERS, DESIGNERS
DEVELOPERS/BUILDERS
LOCAL AUTHORITIES
SEASONAL TRADERS
ENQUIRIES BY FAX:
05601 275088
OR THRU. WEBSITE
www.plantsource.co.uk
Instant Screening Solutions
Rootballed Hedging & Trees

Swimming Ponds

Gartenart
swimming ponds

Swimming pond design
and / or Construction

020 7183 3333
www.gartenart.co.uk

TREE & SHRUB SPECIALISTS



D.W. FROST

Over 30 acres of field
grown trees from
6-8cm to 25-30cm,
bare root and rootballed.

For price and availability
Tel: 01949 20445
lance@dwfrost.com
shane@dwfrost.com
www.dwfrost.com

Nationwide



English Hedging is a family run company specialising in production, sales, delivery and installation of instant evergreen hedging at competitive pricing.

Otterhill Farm, Rowtown, Addlestone, Surrey KT15 1HD
 Mobile: 07552 392 339 | Office: 01932 854 135
www.englishhedging.com



Artificial Grass

Artificial Grass



01244 289 182
www.hitechurf.co.uk
info@hitechurf.co.uk



Aeration

TERRAIN AERATION



Turf and Trees
 10" drill aeration
 1m air injection
 1m soil coring
 Air excavation

Tel: 01449 673783
www.terrainaeration.com
terrainaeration@aol.com

Sprayers



from £445

Quality results for turf care professionals

- Positive displacement pump
- Simple and light to use
- Low ground pressure
- Wheel driven pump
- Consistent application rate
- Robust damage proof boom
- 25L tank
- Boot marker wheels

T: 01353 862044
 E: info@techneat.co.uk
 W: www.techneat.co.uk



Service Lifts



HEFTEE
 SERVICE LIFTS
 COSTS DOWN
 LOST TIME INJURIES
 SAFETY
 PRODUCTIVITY
 PROFIT
08450 773 773
www.psdgroundscare.com

Erosion Control



Hy-Tex (UK) Limited
 Weed Control Fabric
 Turf Meshes
 Root Barrier
 Erosion Control Mats
 Silt Fences
 Newt Barrier Fences
 Windbreak Nets
 Geotextiles

Committed to quality value & service
www.hy-tex.co.uk
 T: 01233 720097 F: 01233 720098

To advertise
 call Ben Rayment
 on 01233 228752

Machinery

Sprayers, Trailers, Water Units,
 Lawn Care, Leaf Sweepers &
 Suckers... & Much More!



01473 328272 or visit
www.schsupplies.co.uk



KING FEEDERS UK
 SPECIALIST SHREDDING & COMPOSTING EQUIPMENT



www.ecogreencomposting.co.uk Tel: 01260 223273



USED WOOD CHIPPERS
 AND STUMP GRINDERS



www.masonwoodchippers.com
john@masonwoodchippers.com
 Tel 01325 377475

To advertise
 call Ben Rayment
 on 01233 228752

Stump Grinders



**Narrow Access
 Stump Grinders**
 0% Finance Available
 Tel: 01420 474600

Sportsturf Machinery



Specialised
 Landscaping
 and Turfcare
 Equipment

Visit www.blec.co.uk
 or call 01778 346222



Turf Cutters Turf Aerators Core Collectors

Versatile
 Reliable
 Performance...
info@groundsmanindustries.com
www.groundsmanindustries.com

STOP PRESS!

‘Biggest and Best’ Rail Live yet!



Green-tech returned to exhibit at Rail Live 2018 which is being heralded as the biggest and best Rail Live yet!

Rail Live 2018 which took place on Wednesday 20th and Thursday 21st June in Warwickshire was organised by RAIL magazine in partnership with Rail Alliance. It is the largest, most comprehensive outdoor event for rail in the UK.

The show has undergone a transformation and unveiled many new developments for 2018 which included live demonstrations from over 400 exhibitors and sponsors.

Green-tech are specialists in tree planting, vegetation management, biodiversity and conservation solutions and showcased their gt Green Screens, chemicals, wildflowers and tree planting products.

Green-tech was really well received and received particular interest in their wildflower seed and tree planting products, erosion control products and gt green screens which provide an instant and green alternative to fencing and barriers.

Sowing the seed for digital

John O’Conner, has had a digital face-lift with the unveiling of its brand-new website in partnership with leading digital marketing agency Adtrak.

The Nottingham-based agency is a digital partner of the British Association of Landscaping Industries (BALI), and was called on to create a modern, responsive and informative online hub for John O’Conner’s services, clients and potential customers. The new website is a reflection of the company’s continued investment in its digital footprint.

Matt O’Conner, John O’Conner’s Managing Director and Vice Chairman of the BALI Board of Directors said, “Adtrak worked

closely with us at initial project stage to fully understand our sector, our business and the services we provide. The team was able to translate the look and feel of our business into an exciting, slick and functional website we are all proud of.”

Utilising the full suite of Adtrak’s services, John O’Conner is now firmly on the digital map with sophisticated photography and video taking pride of place on the website and behind the scenes online marketing tools working hard to drive people to the site.

Woolsington Garden Centre site acquisition

The FLOURISHING North East garden centre has secured its long-term future and safeguarded up to 50 jobs after acquiring its Woolsington site as the family firm celebrates four decades in business.



Heather Williamson, Joint Chairman of Wyevale Nurseries, presenting Joshua Stone from Pershore College with the Peter Williamson Travel Award.

JOSHUA Stone from Pershore College was presented with Wyevale Nurseries’ Peter Williamson Travel Award.

The 19-year-old, who has just finished in his first year of a Level 3 Extended Diploma in Horticulture, scooped the accolade after impressing the judges with a written submission and an interview.

Steve Ashworth, Director at Wyevale Nurseries in Hereford, explained: “We would like to say a huge congratulations to Joshua on winning this prestigious award. We designed it to encourage a student towards a career in nursery stock production by assisting with a practical placement at a nursery in the Netherlands.

“Joshua was chosen as the winner due to his spirit of adventure, his application to study and participate in extra-curricular activities at college, and his belief that we all have to step outside our comfort zones to gain anything. As an aspiring landscape architect, Josh hopes to progress on to the Landscape Design degree course at the University of Gloucester.

Next month in **THE LANDSCAPER**

PRESS DATE FRIDAY JULY 13

HAMPTON COURT FLOWER SHOW

MOWERS

WEED CONTROL

GOING ELECTRIC



PLUS ALL THE REGULAR FEATURES!

ARBORIST | HORTICULTURE | HARDSCAPER

ALL THE LATEST INDUSTRY NEWS

FOR ALL ADVERTISING AND MARKETING ENQUIRES

Richard Rowe

Account manager

01233 228757

richard@landscapermagazine.com

Ben Rayment

Account manager

01233 228752

ben@landscapermagazine.com

EDITORIAL

David Curtis

david@landscapermagazine.com

0208 891 4850



GaLaBau 2018

gardening. landscaping.
greendesign.

Nuremberg, Germany
12 – 15. 9. 2018
galabau-messe.com

THE SIGNS ARE ON GREEN

Your Trade Fair with:

- **About 125,000 m² with over 1,400 exhibitors**
- **Products and services for the design, construction and maintenance of green spaces**
- **Latest trends and inspiring product innovations**

HONORARY SPONSOR

Bundesverband Garten-,
Landschafts- und Sportplatzbau e. V.
www.galabau.de

ORGANIZER

NürnbergMesse GmbH
T +49 9 118606-4990
visitorservice@nuernbergmesse.de